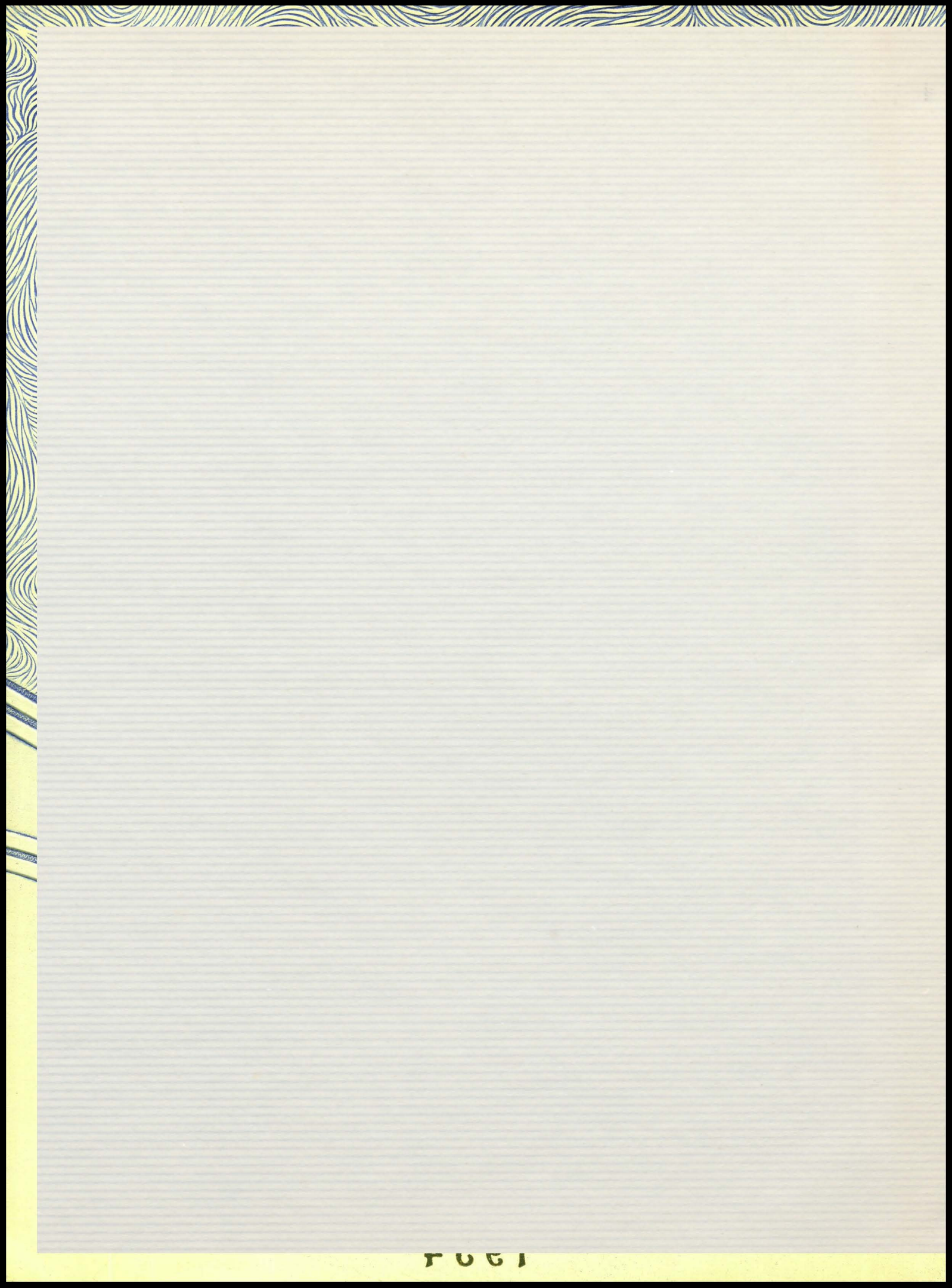
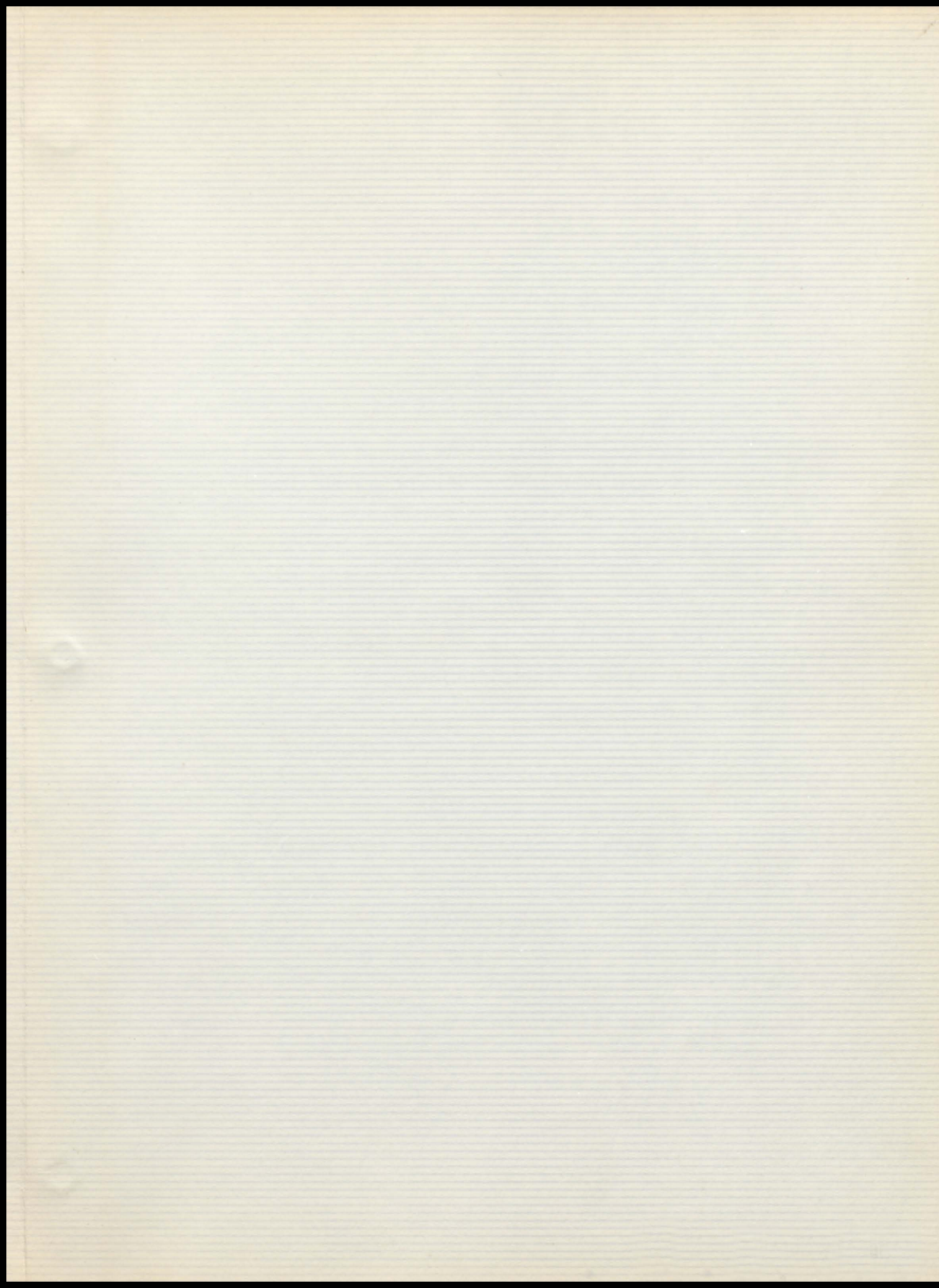
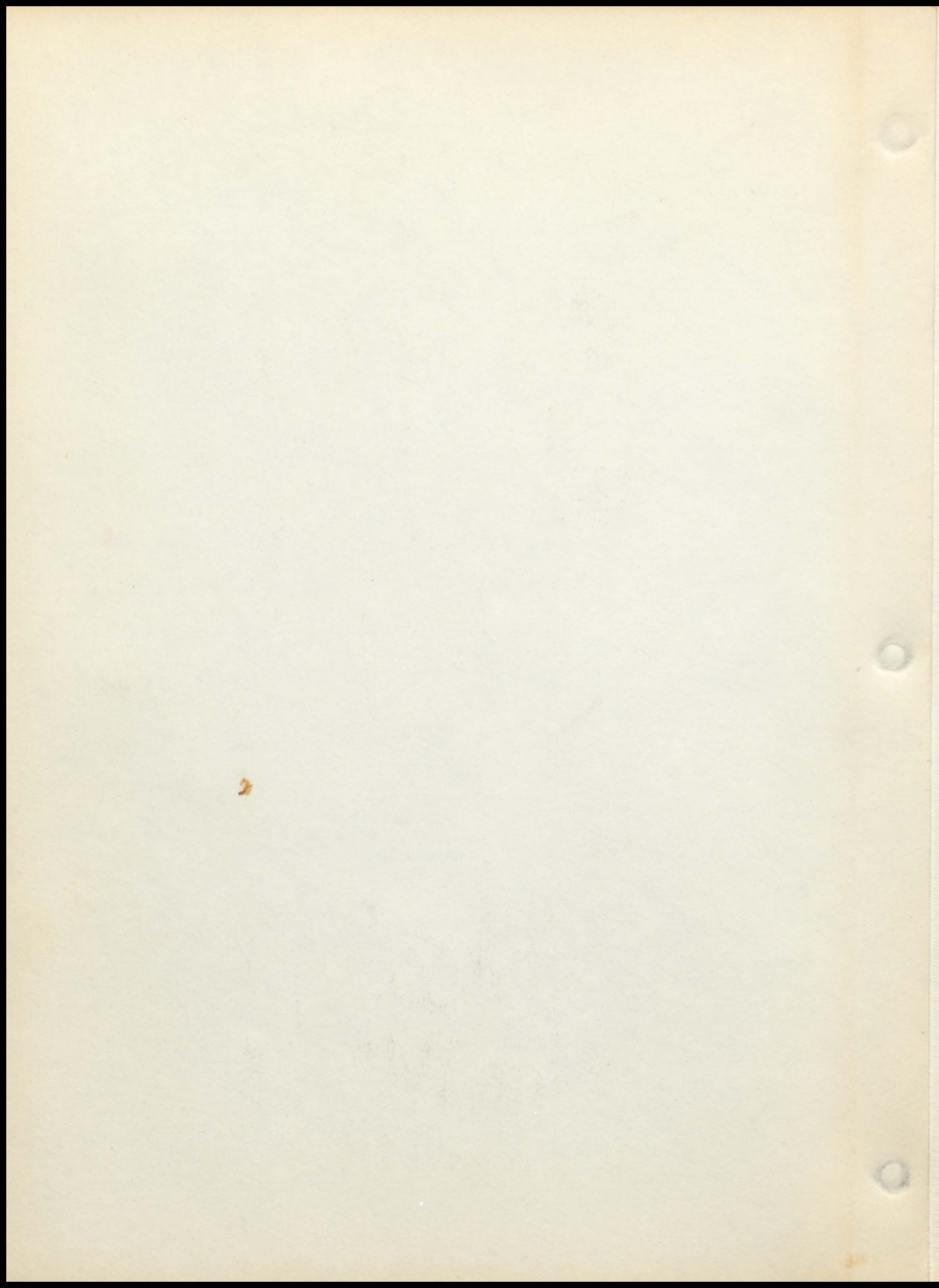


The Elk
1954





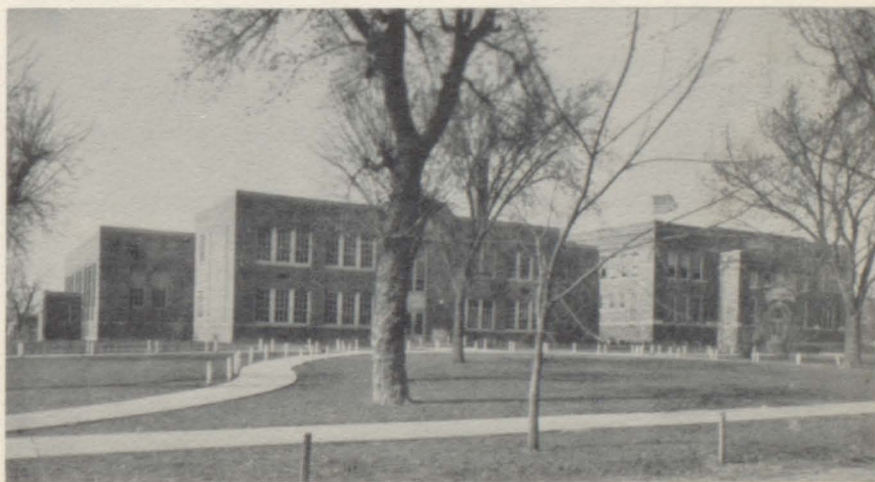


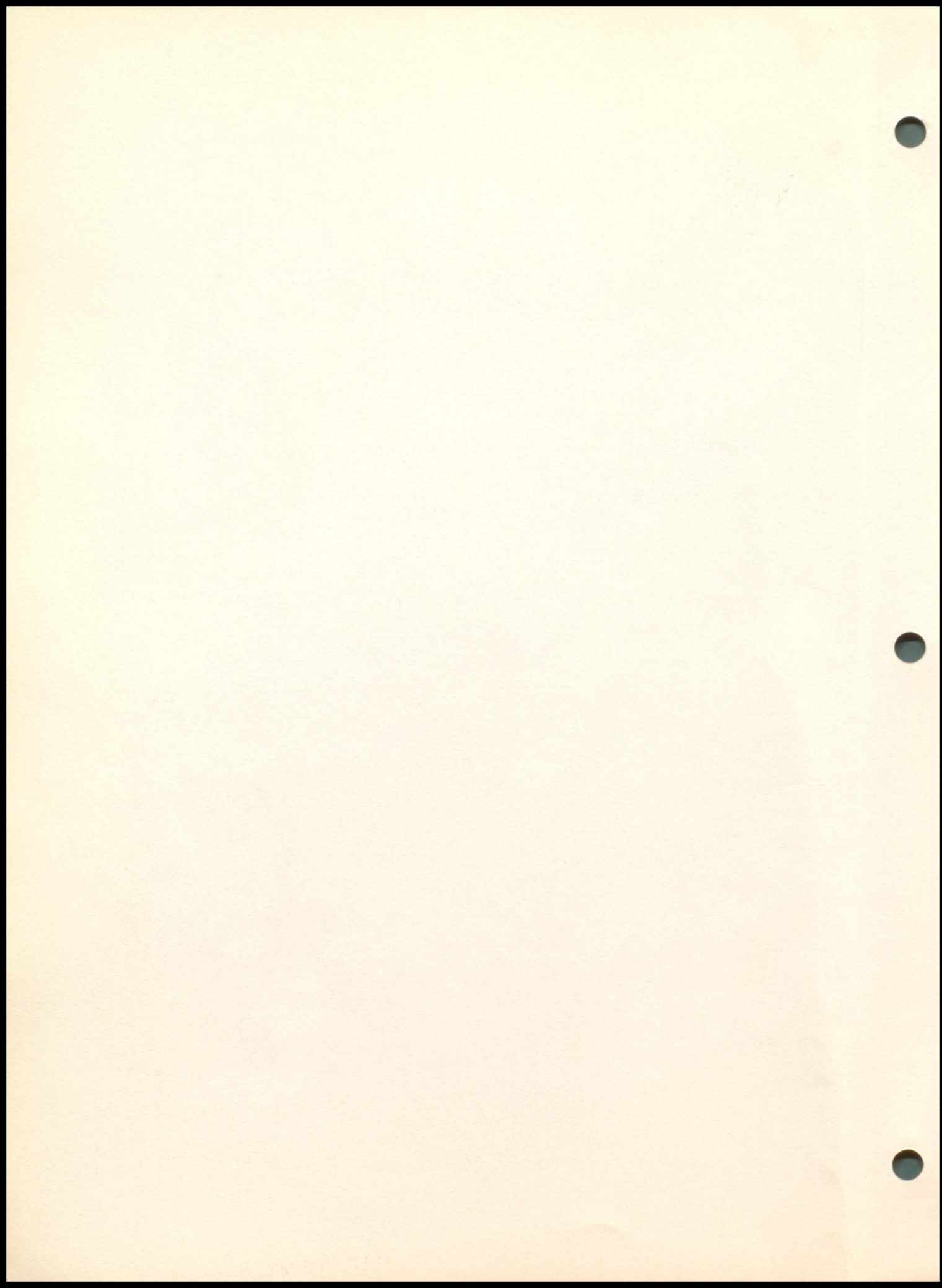


The Elk

*Published By
The Senior Class
of
Elk Point High School*

Lois Thorson--Editor
Cynthia Glass--Business Manager
Celene Bernard--Art Editor





In this volume it has been our purpose to record events of the year, taking special care to set forth with well-deserved prominence, the Senior class. We have tried to make this a pleasant review of school life and hope that, in years to come, a glance at these pages will bring you back to the days of "Dear Old Elk Point High."

THE ANNUAL STAFF

Fare word

EPHS



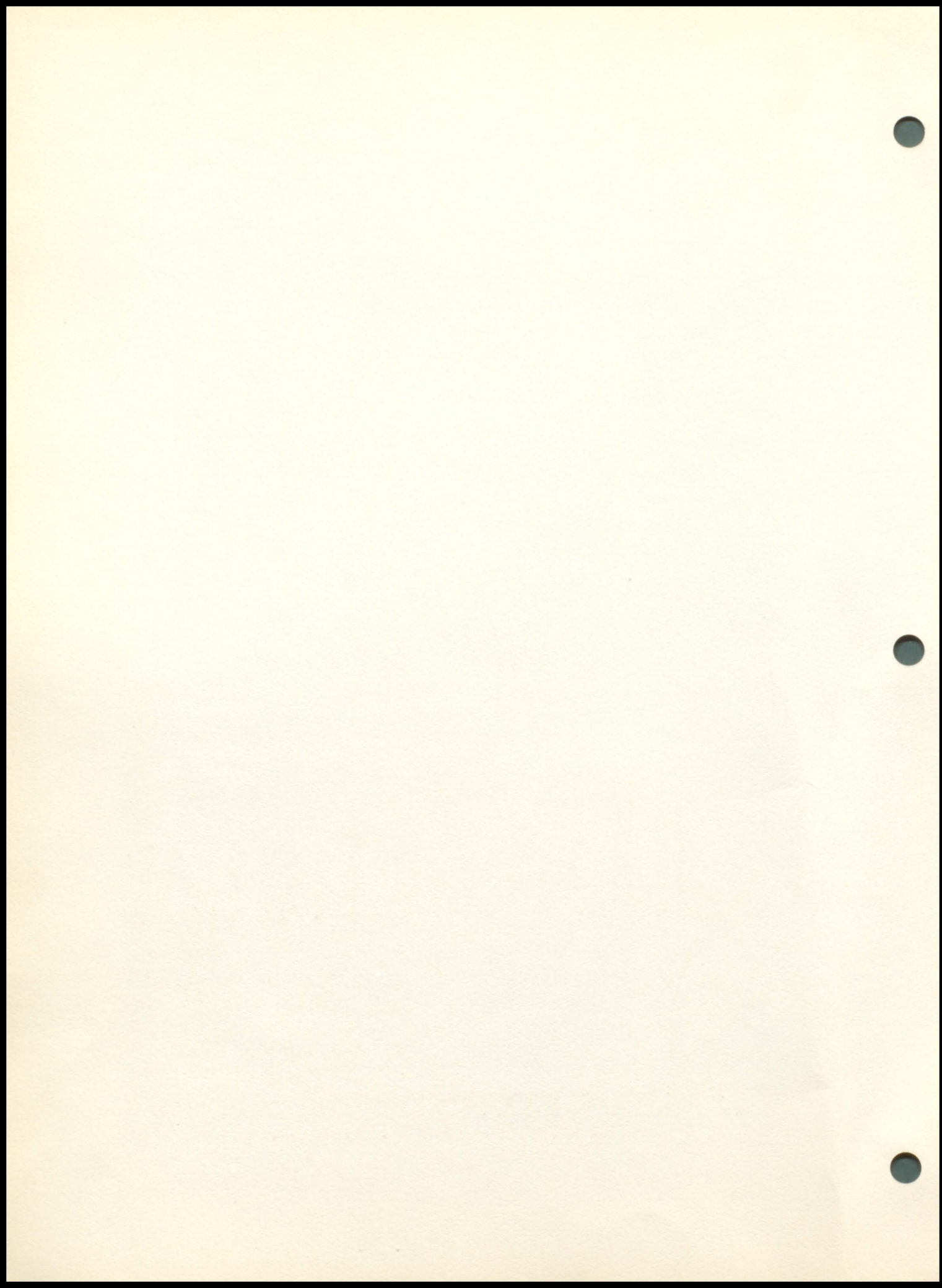
THIS PAGE SPONSORED BY A. J. BECK, LAWYER

Light

Direct

12-20-90

Adult Fiction

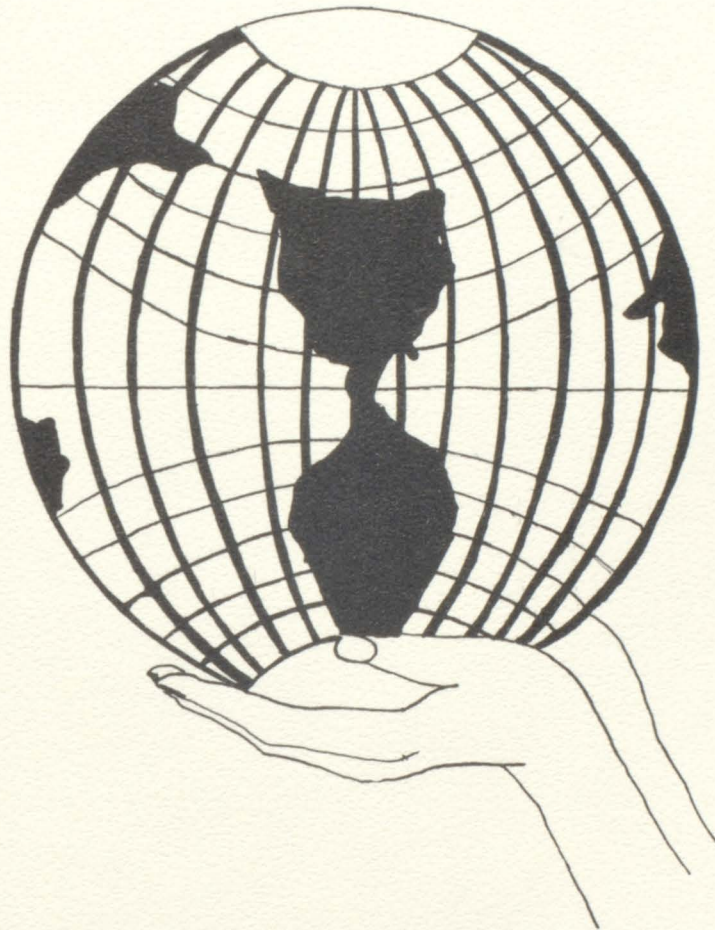




Dedication

We, the Senior Class of 1954, dedicate this edition of The Elk to Mrs. Elizabeth Bristow in recognition of her ability as instructor of English and Dramatics, and for all the things she has done to make our high school years so pleasant and memorable.

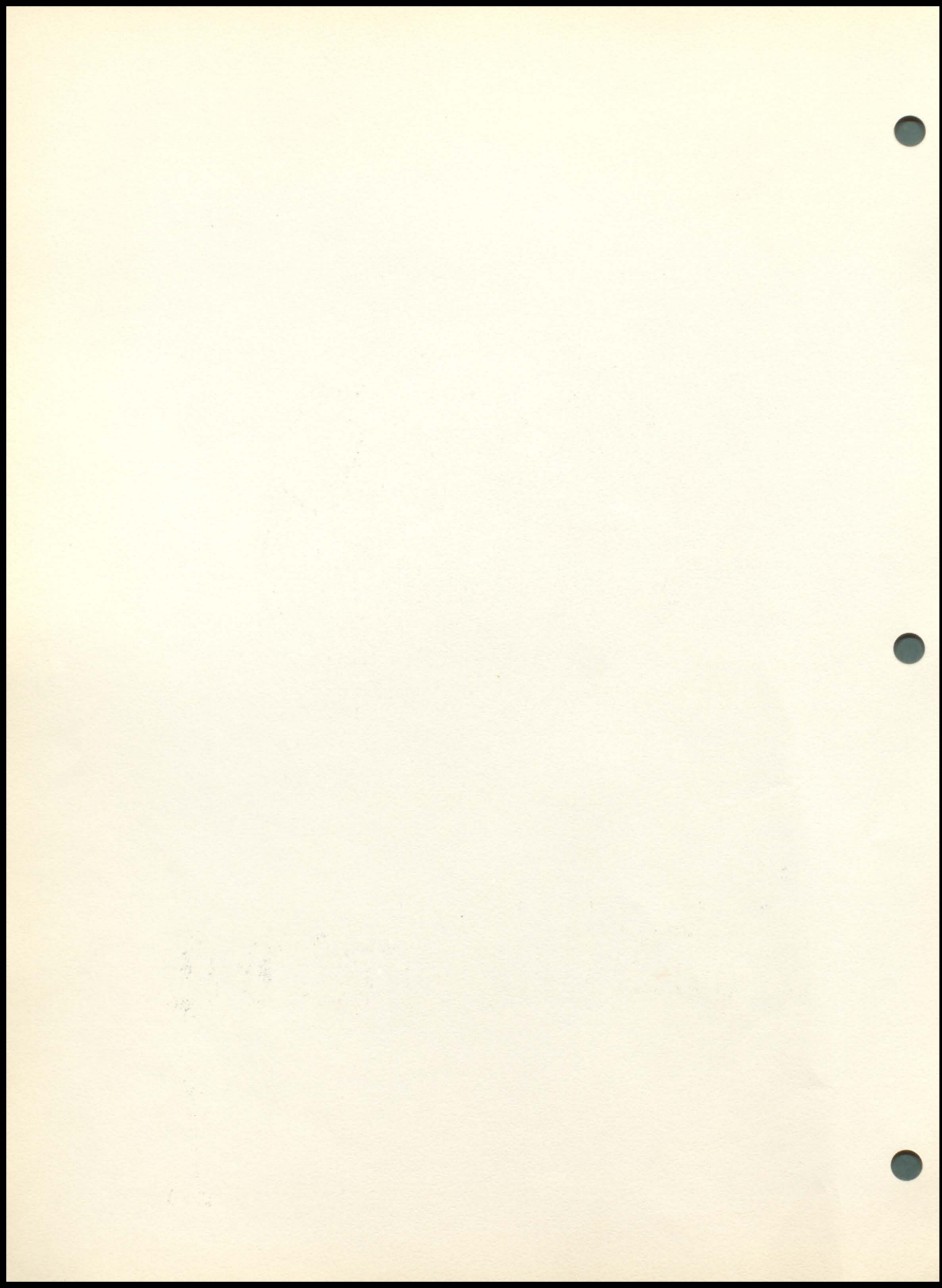
THIS PAGE SPONSORED BY AUTO ELECTRIC COMPANY



Administration

THIS PAGE SPONSORED BY BANK OF UNION COUNTY

C.B.





D. R. Jacoby, Principal



G. T. Williams, Superintendent

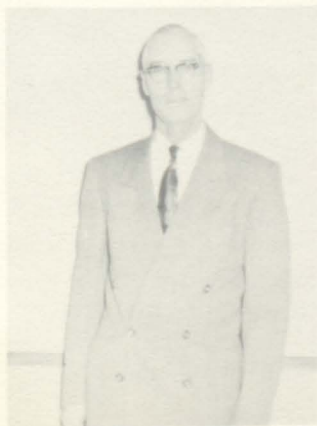


Allen Parsons

Board of Education



L. E. VanBockern



S. W. Gurney



George Fennel



Art Jacobson, President

THIS PAGE SPONSORED BY BRAY MOTORS



Faculty

ROBERT BECK

Music

ELIZABETH BRISTOW

English



ALFRED CROGAN

Social Studies and Asst. Coach

GLADYS DONNELLY

Business Education



RICHARD FORMAN

Science and History

DUAINE FORMAN

English and Biology



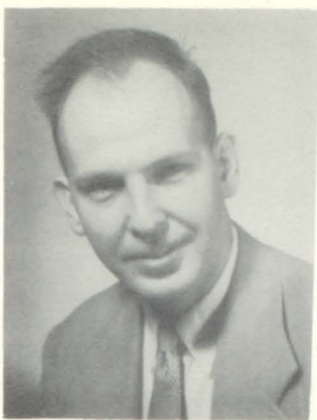
DARLENE STURGES

Home Making

ARTHUR TONN

Agriculture





CHARLES VOSS

Coach & Mathematics



GLADYS J. WILLIAMS

Secretary



ANDREW SORENSON

Custodian

Annual Staff



- 1st Row: Miss Donnelly--Sponsor, Don Hasson--Assistant Business Manager, Cynthia Glass--Business Manager, Lois Thorson--Editor, Lois Shedd--Assistant Editor, Martin Sommervold--Sports Editor, Evonne Johnson--Jr. Representative.
- 2nd Row: Arlis Granstrom, Marlys Livingston, Kerin Solberg, Bob Livingston, Kenneth Massey, Keith Massey, Shirley Bertrand, Madonna Hanson, Avis Beavers.
- 3rd Row: Dorothy Kyle, Celene Bernard, Kathleen Anderson, Darmon Staum, Dale Jones, Margaret Card, Patty Lynch, Jean Squires.

THIS PAGE SPONSORED BY CARL'S LUNCH



Seniors

THIS PAGE SPONSORED BY COTTAGE CAFE C.B.



KATHLEEN ANDERSON

"She's right in step when it comes to pep."
Band 1234, Girls Glee Club 1234, GAA 1, FHA 4, Junior Play 3, Pointer Staff 4, Year Book 4, Girls Sextette 4, Pep Club 2, Mixed Chorus 34.



AVIS BEAVERS

"Her pretty smile makes life worthwhile."
Cheerleader 1234, Pep Club 2, GAA 1, Class Officer 3, FHA 4, Student Council Officer 3, Pointer Staff 34, Year Book 4, FHA Officer 4, Attendant 234, Ass't Editor of Pointer 4, Flag Twirler 3.



CELENE BERNARD

"She has found her happiness."
Glee Club 1234, Mixed Chorus 234, Band 23, GAA 1, Sextette 34, Year Book 4, Vocal Solo 1234.



SHIRLEY BERTRAND

"Life is such fun."
GAA 1, Pep Club 2, Girls Glee Club 1234, Mixed Chorus 34, FHA 4, FHA President 4, Pointer Staff 34, Pointer Editor 4, Librarian 4, Year Book 4, Class Officer 3, Flag Twirler 3.



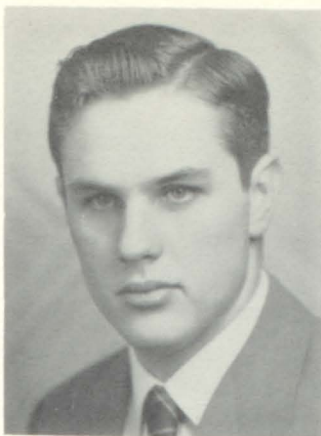
MARGARET CARD

"Get acquainted with her, she will surprise you."
Glee Club 1, Declam 2, Pep Club 2, FHA 4, Librarian 4.



EVON DAILEY

"Silence is golden."
Girls Glee Club 1234, Mixed Chorus 34, GAA 1, Pep Club 2.



JAMES EASTON

"Minds are like horses, one must exercise them if you wish to keep them in working order." Football 1234, Track 12, Letter Club 234, Basketball 1.



DONALD FENNEL

"Most great men are dead or dying and I'm not feeling so well myself." Glee Club 1234, FFA 1234, Mixed Chorus 1234, FFA Officer, Class Officer 3, Business Manager of Junior Play 3, Boys' State 3.

CYNTHIA GLASS

"With an independence all her own, she plays the keys of her life."

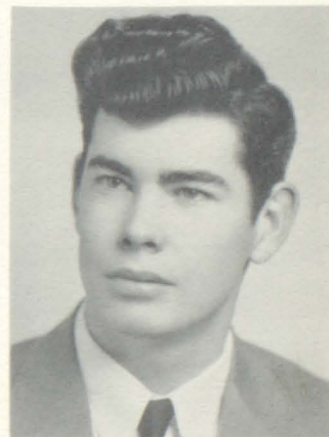
Glee Club 1234, Mixed Chorus 1234, Mixed Quartette 3, Declam 1234, Solo 1234, GAA 1, FHA 4, FHA Officer 4, Pointer 4, Year Book 4, Business Manager 4, Band Majorette 1234, Pep Club 2 Junior Class Play 3, Girls Sextette 4.



NORMAN GIRARD

"I like work--it fascinates me; I can sit and look at it for hours."

Basketball 12, Track 1234, Mixed Chorus 1234, Football 123, Boys Glee Club 1234, Junior Class Play 3.



ARLIS GRANSTROM

"Happy is she who has decided."

Glee Club 1234, Mixed Chorus 1234, Girls Sextette 34, GAA 1, Junior Class Play 3, Year Book 4, Pointer Staff 4, FHA 4, Attendant 1, Band 1234, Pep Club 2, Class Officer 1, Band Officer 4.



MADONNA HANSON

"Leave it up to her to think up the mischief."

Girls Glee Club 1234, GAA 1, Pep Club 1, Mixed Chorus 1234, FHA Officer 4, Pointer Staff 34, Year Book 4, Octette 4.





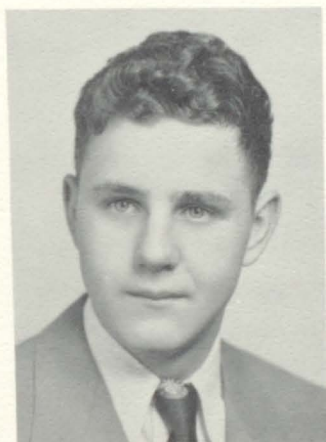
DON HASSON

"The Irish have it."
Football 1234, Basketball 1234,
Track 1234, Class Officer 3,
Student Council President 4,
Year Book 4, Pointer Staff 4,
Glee Club 1, Junior Class Play
3, Letter Club 1234.



BESSIE IRWIN

"I'm little but, Oh My!"
GAA 1, Pep Club 2, FHA 4.



GLENN JOHNSON

"He's a hustler, never idle,
and almost always thoughtful of
others!"
Junior Class Play



DALE JONES

"Big in Stature and in Mind."
Football 234, Basketball 234,
Track 234, Letter Club 234,
FFA 234, Attendant 4, Year Book
4, Entered Sophomore Year.



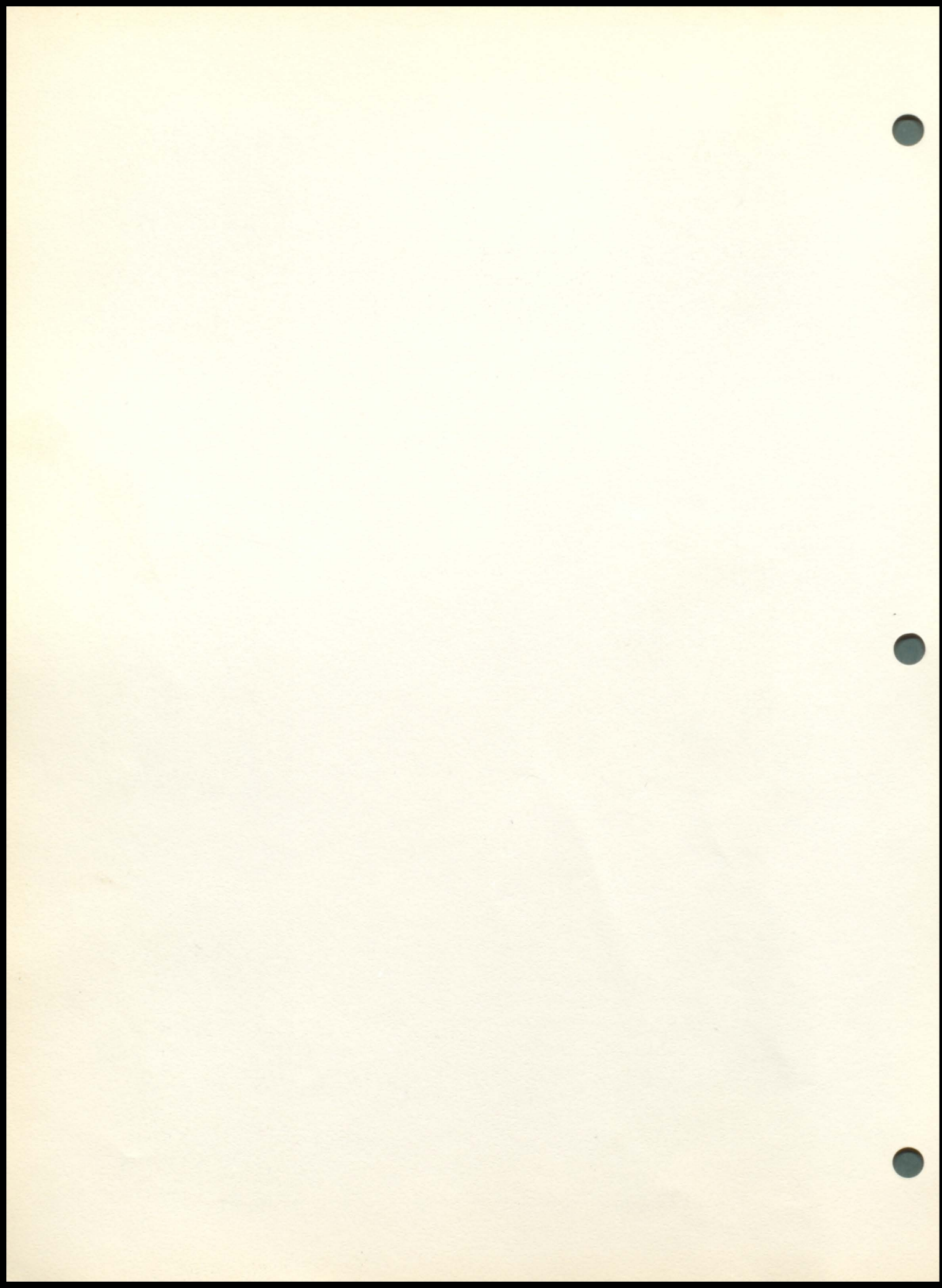
DOROTHY KYLE

"Hidden in the chambers of her
personality are treasure chests
of Friendship."
Band 1234, Girls Glee Club 1234
Mixed Chorus 1234, Pep Club 2,
Year Book 4, FHA Officer 4, GAA
1, Sextette 4.



MARLYS LIVINGSTON

"Knowing is liking."
GAA 1, Library 3, Pointer Staff
23, Year Book 4, Pep Club 2.





ROBERT LIVINGSTON

"I don't think I'm good looking
But what's my opinion against
the rest of the world."

Football 134, basketball 134,
Letter Club 34, Track 14, Mixed
Chorus 14, Glee Club 14, Year
Book 4, Baseball 1.



PATRICIA LYNCH

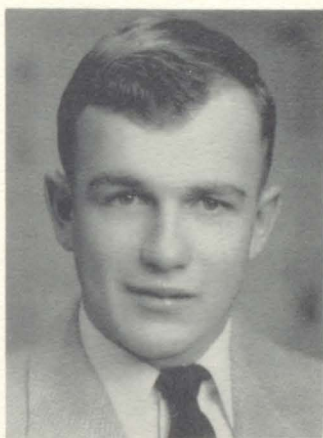
"I chatter chatter as I go."

FHA 4, GAA 1, Glee Club 12, Pep
Club 2, Library 4, Declam 234,
Year Book 4.

KEITH MASSEY

"You don't have to be in a cir-
cus to be a clown."

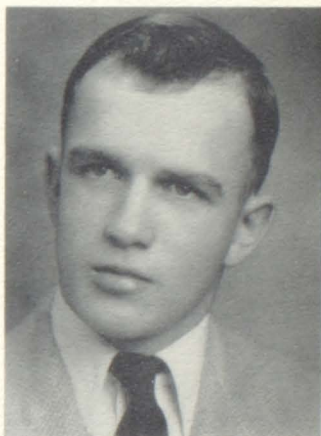
Basketball 1234, Track 234,
Football 1234, FFA 1234, Glee
Club 4, Mixed Chorus 4, FFA Of-
ficer 3, Year Book 4.



KENNETH MASSEY

"He likes to start things off
with a bang."

Football 1234, Basketball 1234,
Year Book 4, Letter Club 234,
Glee Club 4, Mixed Chorus 4,
King 4, FFA 1234, Track 1234,
FFA Officer 3.



ODEAN OLSON

"Sober but not serious, quiet
but not still."

Band 1234, Solo 234, Clarinet
Quartette 34, Boys Glee Club
1234, Mixed Chorus 1234, FFA
234.

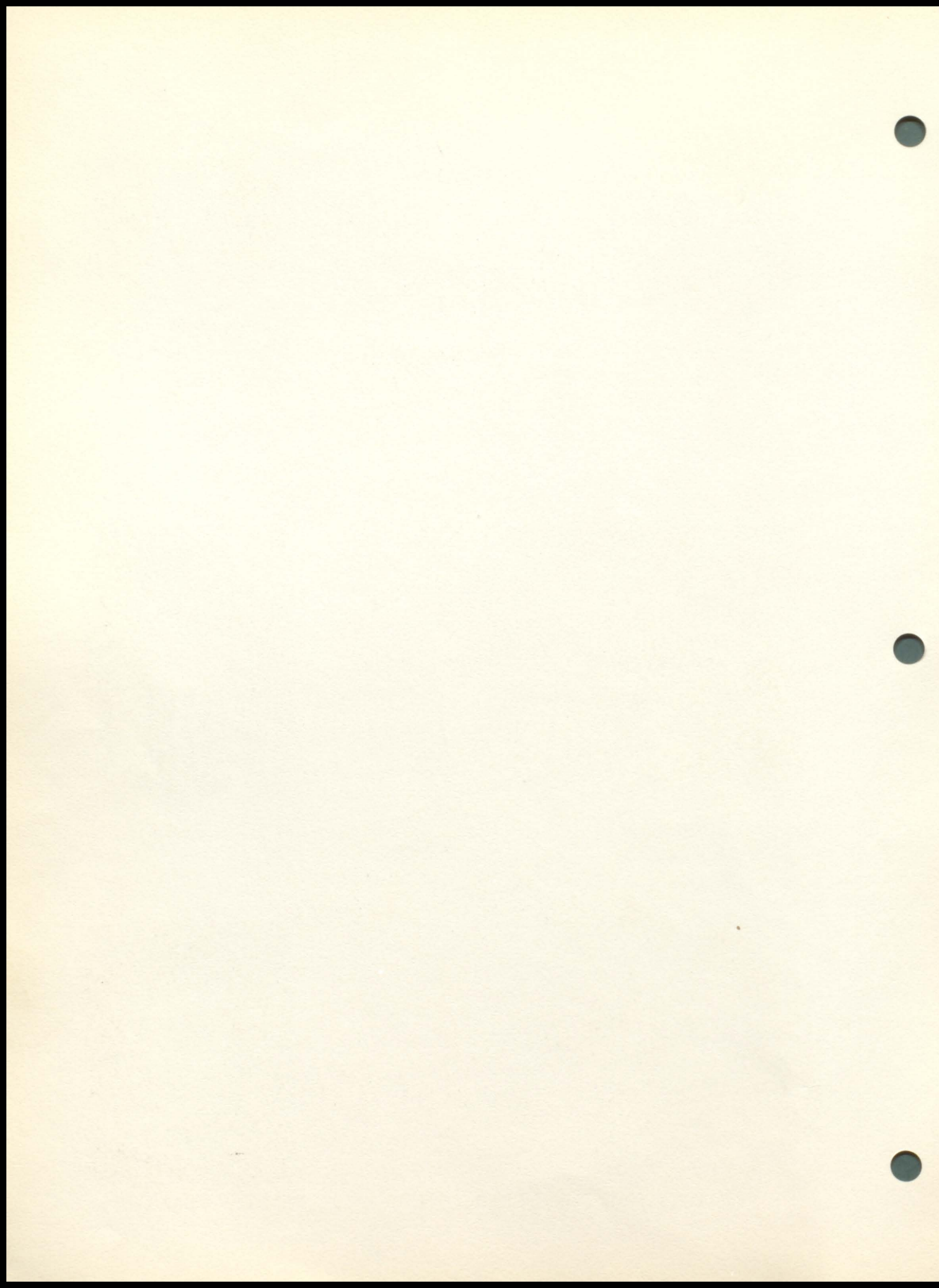


WILLIAM POHLEN

"Late hours are not good for
one, but okay for two."

Glee Club 1234, Mixed Chorus 12
34, Basketball 1, Track 1, Jun-
ior Class Play 3, Boys Octet 1.







LOIS SHEDD

"Constantly happy."
Glee Club 1234, Mixed Chorus 12
34, Girls Sextette 34, Band 234
GAA 1, FHA 4, Year Book 4,
Pointer Staff 34, Pointer Bus-
ness Manager 4, Year Book Ass-
istant Editor 4, Class Officer
4, Pep Club 2, Attendant 34,
Band Officer 4.



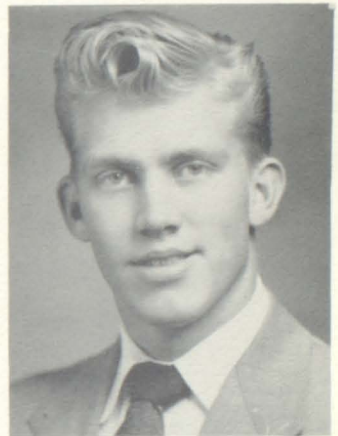
KERIN SOLBERG

"She's still in her teens so
why act dignified."
GAA 1, Glee Club 12, Librarian
3, Pointer Staff 34, Year Book
4, Pep Club 2, FHA 4, FHA Offi-
cer 4.



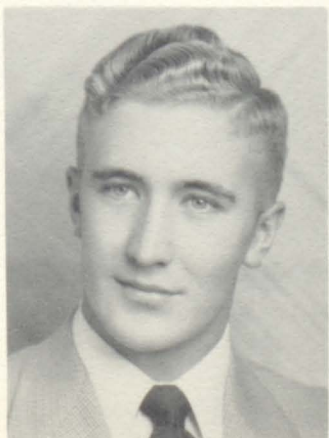
JEAN SQUIRES

"She came unheard and silently
went away."
Band 34, Girls Glee Club 1234,
Mixed Chorus 1234, Declam 234,
Vocal Solo 14, GAA 1, Pep Club
1.



MARTIN SOMMERVOLD

"I sleep on the installment
plan, 45 minutes a class."
Glee Club 4, Football 1234, FFA
1234, Basketball 34, Track 1234
Letter Club 234, Year Book 4,
FFA Officer 3, Vocal Solo 4.



DARMON STAUM

"Of curls he has many, of
friends he has more."
Football 1234, Basketball 123,
Track 1234, Band 34, Boys Glee
Club 1234, Letter Club 234,
Class Officer 124, Boys Quart
Ette 4.



LOIS THORSON

"This little lass is the Queen
of our class."
Declam 1234, Pointer 234, Bus-
iness Manager of Pointer 3, FHA
4, Cheerleader 1234, Pep Club 2
Year Book 34, Year Book Editor
4, Girls Glee Club 1234, Mixed
Chorus 34, Girls' State 3, Good
Citizenship 3, D.A.R. 4, Class
Officer 234, Queen 4, GAA 1,
Flag Twirler 3, Student Council
4, Librarian 4.



ARLAN ENGSTROM

"Enjoy yourself; life is short."

COLLEEN PEDERSON

"Her eyes speak, when her lips do not."
Glee Club 123, Mixed Chorus 23
3, Vocal Solo 123, Declam 13,
Pep Club 1, Junior Class Play
3, GAA 1.



Class Officers: Lois Shedd--
Secretary-Treasurer; Lois Thor-
son--President; Dale Jones--
Vice-President; Darmon Staum--
Student Council.



CLASS MOTTO

"Our aim, Success; Our Hope, To win."



CLASS FLOWER
Red Rose

CLASS COLORS
Crimson and Silver

CLASS ADVISORS
Donald Jacoby and Alfred Crogan

THIS PAGE SPONSORED BY FARMERS UNION ELEVATOR COMPANY.

Squirts



Celene B.



Avis B.



Patty L.



Odean O.



Arlis G.



Cindy G.



Lois T.



Jean S.



Evon D.



Shirley B.



Margaret C.



Dorothy K.



Don H.



Bessie I.



Kenny

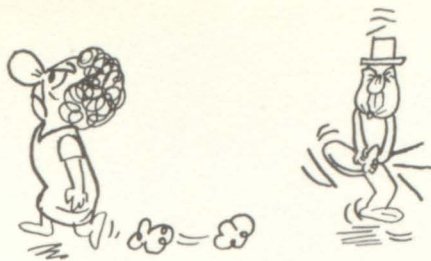
Keith



Madonna H.



Kathlene A.



Freshmen

Sophomores



Juniors

Juniors



Craig Beck
Sadie Carreil



Dick Chicoine
Beverly Clifford
Norman Dailey
David DeBuhr



Barbara Duhaime
Malyn Eidem
Gerald Flannery
Donald Gray



Annabelle Groethe
Barbara Guillaume
Kay Hoffman
Alice Irwin



Lavina Jeffries
Esther Johnson
Evonne Johnson
Robert Kvidahl



Barbara LaFerrier
Kent Lande
John Larson
Max Law



Eugene Livingston
 Fabiola Lynch
 Gary Matson
 Ardean Richardson



Adeline Riehle
 Marrin Rogers
 Kenneth Rosenbaum
 Madonna Smith



Winna Mary Staum
 Dale Tramp

Not Pictured: Ronald Molzen and
 Jules Ness



David DeBuhr, Student Council;
 Max Law, Vice-President; Beverly Clifford, Secy-Treas.;
 Kay Hoffman, President.

Sophomores



Glenn Austin
 Gary Bancroft



Colleen Benjamin
 Margaret Berndt
 James Card
 Deanne De Boise

THIS PAGE SPONSORED BY HALVERSON HARDWARE



Carole Donnelly
Eddie DuBray
Jaunita Easton
Wally Erickson



Richard Harkness
Raymond Heck
Shirley Hoffman
James Ide



Ray Ide
Dwight Johnson
Martin Jorgenson
Barbara Joy



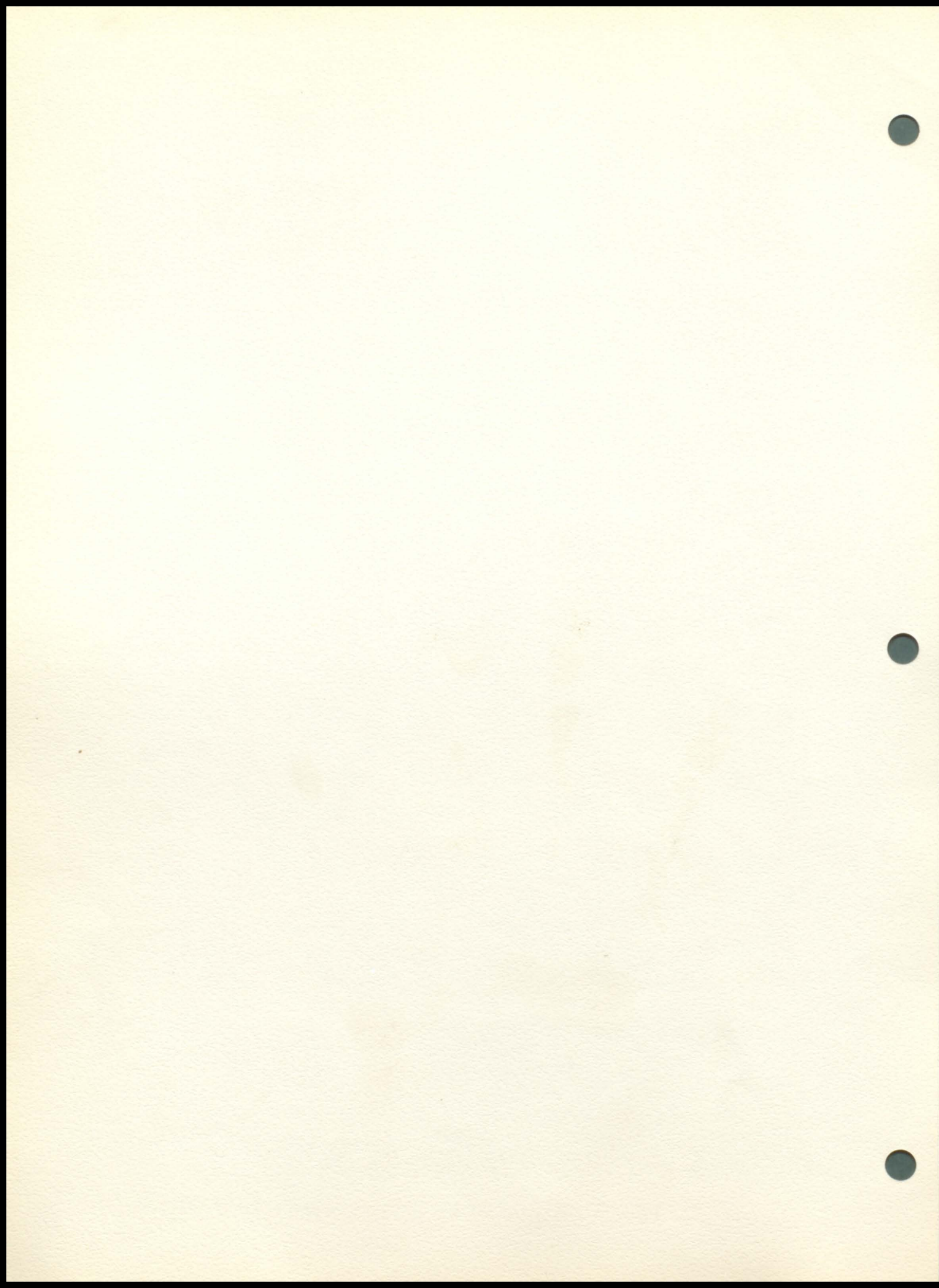
Hartley Limoges
Fred Lungren
Arline Lyle
Mary Lynch



Colin Molzén
Alyce Quam
Shirley Raynor
Janice Rosenbuam



Jack Sanford
Jane Smith
Gerald Sommervold
Margaret Teply





Lyla Timm

Karen Thomas

Donald Thompson

Francis Tracy



Robert Uherka

Ronald Wensel

Virginia Wyant

Not pictured: Lyle Timm



Ray Ide, Student Council;
Walter Erickson, Vice-President;
Jack Sanford, President;
Janice Rosenbaum, Secy-Treasurer.

Freshmen



Norris Bancroft

Dale Beerman

Patty Broderson

Barbara Chaussee



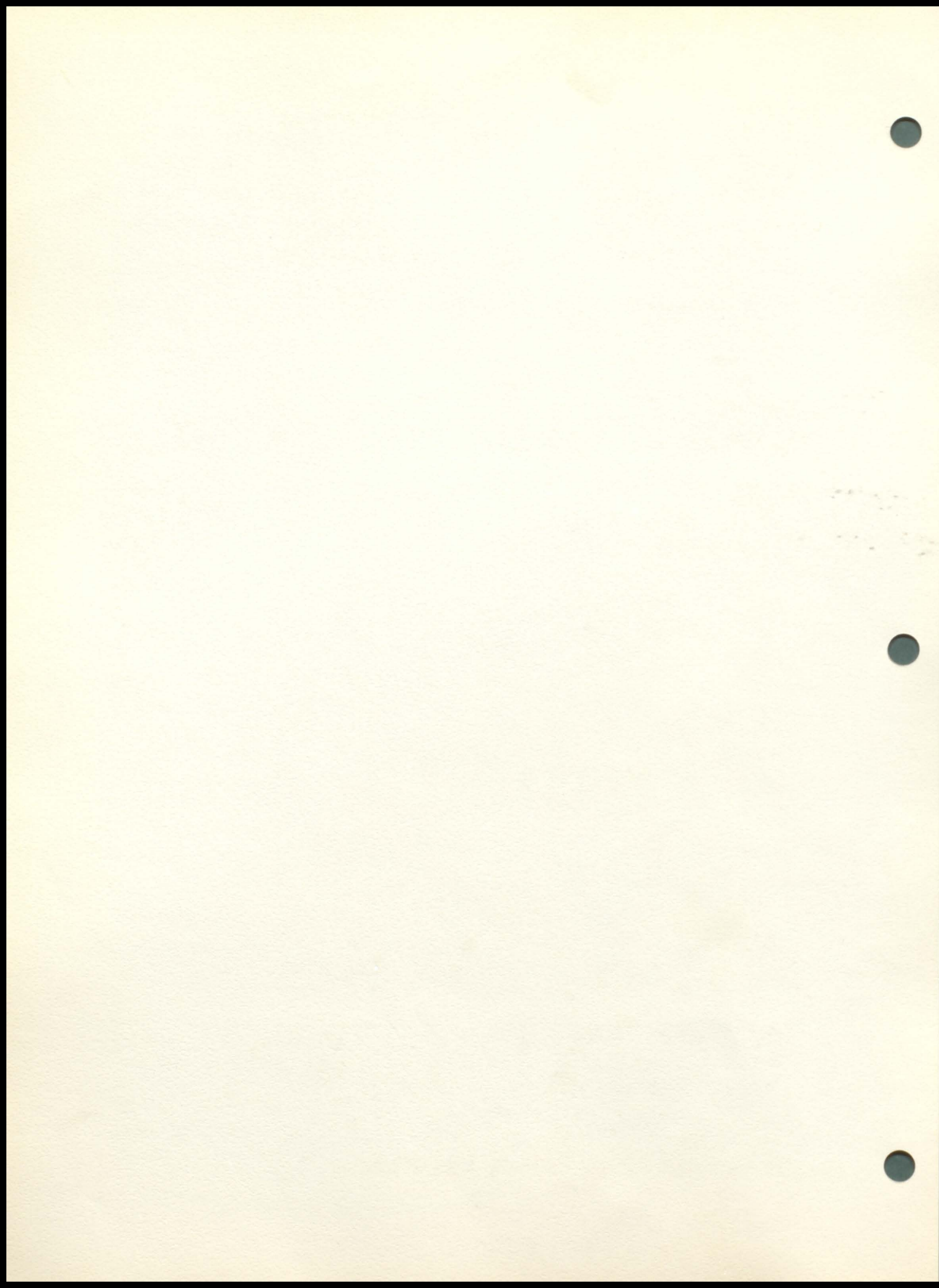
Julian Chicoine

Jackie DeBuhr

Shirlee Duhaime

Elgene Erickson

THIS PAGE SPONSORED BY HASSON MOTOR SERVICE





Harlene Goodroad
 Ronald Guillaume
 Jean Guy
 Ceola Kyle



Bruce Livingston
 James Ness
 Grace Pies
 Rocklin Quam



Marlene Rosenbaum
 Norma Lee Shearon
 Norman Shedd
 Joan Staum



Sharon Thorson
 Rexine Tone
 David Wiksell
 Frances Wyant



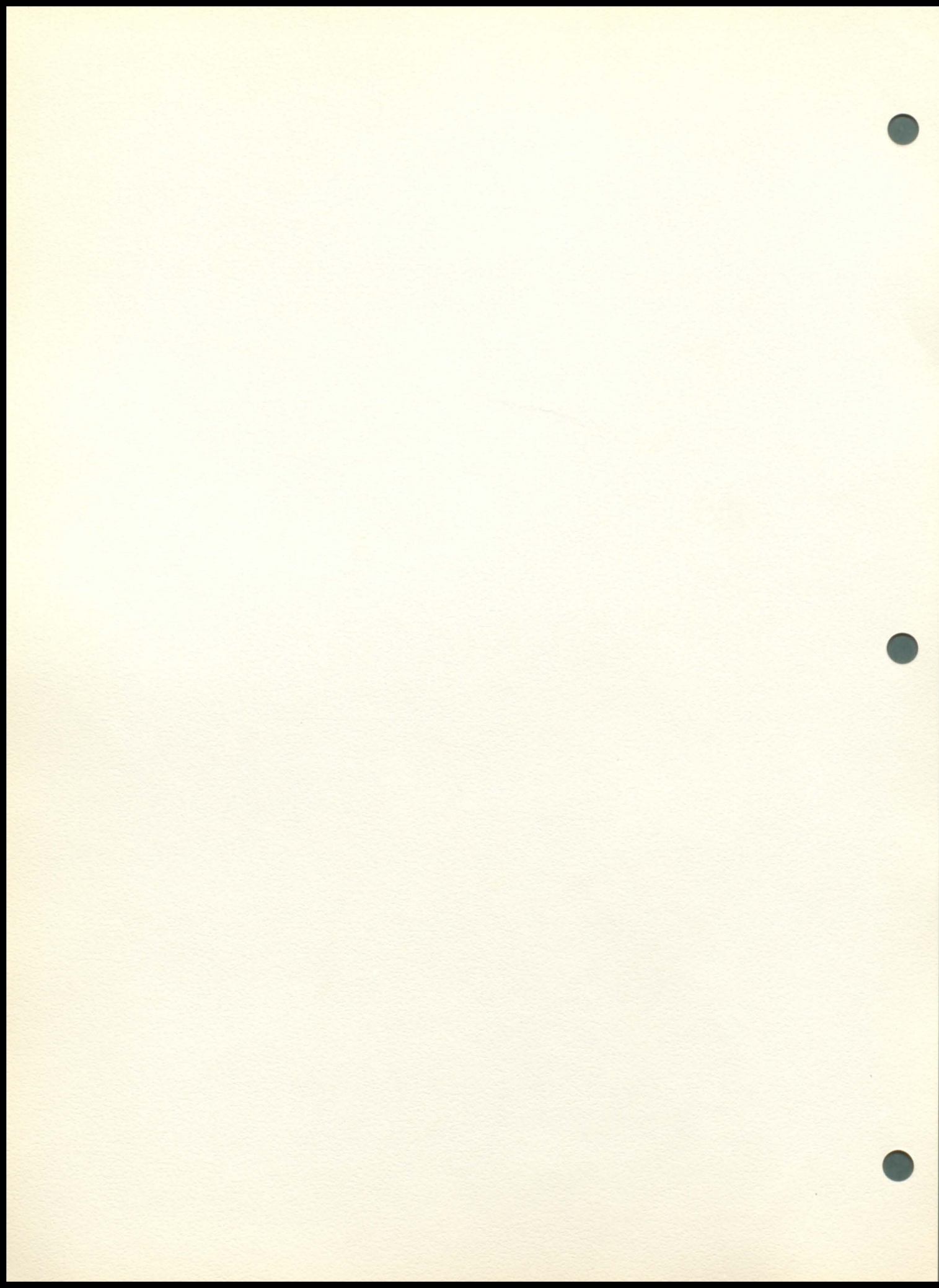
Marlene Rosenbaum, Vice-President; Bruce Livingston, President; Rocklin Quam, Student Council; Barbara Chaussee, Secretary-Treasurer.



Activities

THIS PAGE SPONSORED BY ISAAK CLINIC

C.B.



Student Council



Sitting: Don Hasson-President, Kay Hoffman-Secretary, David DeBuhr, Darmon Staum, Lois Thorson Vice-President.
 Standing: Mr. Jacoby-advisor, Jack Sanford, Ray Ide, Rocklin Quam, Bruce Livingston.

Pointer Staff



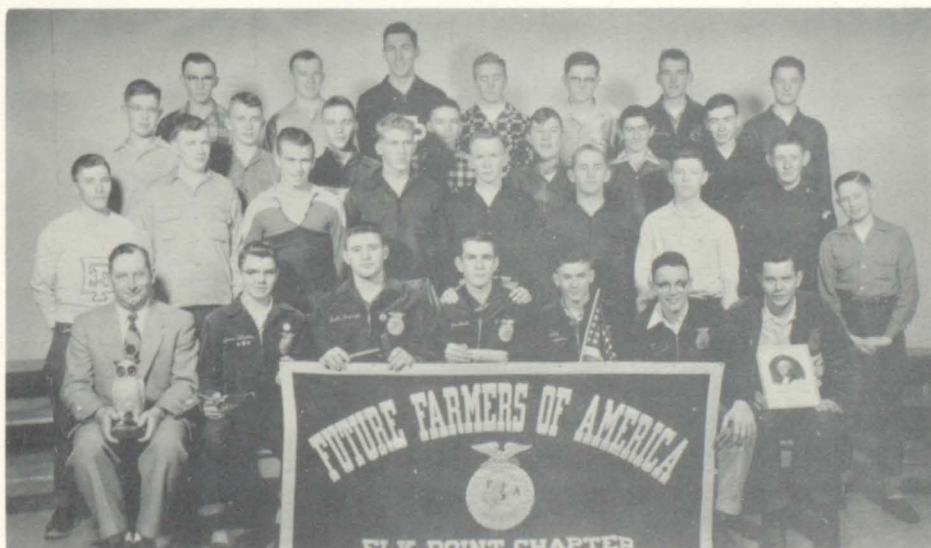
1st Row: Shirley Bertrand Editor, Avis Beavers Ass't Editor, Lois Shedd Business Manager, Don Hasson Sports Editor.
 2nd Row: Miss Donnelly-advisor, Kay Hoffman, Madonna Hanson, Cindy Glass, Lois Thorson.
 3rd Row: Arlis Granstrom, Marlys Livingston, Kathleen Anderson, Kerin Solberg, Anna Belle Grothe, Adeline Riehle, Lavina Jefferies, and Barbara Duhaime.

THIS PAGE SPONSORED BY JACOBSON LOCKER SERVICE.

F R A



1st Row: Janice Rosenbaum, Beverly Clifford, Madonna Hanson, Avis Beavers, Mrs. Sturges--Director, Shirley Bertrand-President, Kerin Solberg, Cynthia Glass, Dorothy Kyle.
 2nd Row: Arlene Lyle, Marlene Rosenbaum, Sharon Thorson, Patty Broderson, Harlene Goodroad, Grace Pies, Alice Irwin, Carole Donnelly, Shirley Hoffman, Margaret Berndt.
 3rd Row: Colleen Benjamin, Barbara Chaussee, Barbara Joy, Frances Wyant, Fabiola Lynch, Sadie Carroll, Rexine Tone, Shirlee Duhaime, Jane Smith, Bessie Irwin.
 4th Row: Mary Lynch, Norma Shearon, Lavina Jefferies, Shirley Raynor, Ceola Kyle, Lyla Timm, Jaunita Easton, Margaret Teply, Deanne DeBoise, Alyce Quam.
 5th Row: Karen Thomas, Jean Guy, Arlis Granstrom, Lois Shedd, Marlys Livingston, Kathleen Anderson, Margaret Card, Patty Lynch, Lois Thorson, Kay Hoffman, Virginia Wyant.



1st Row: Mr. Tonn, Director; Odean Olson, Dale Tramp, Jack Sanford, Donald Thompson, Jon Larson, Donald Fennel.
 2nd Row: Malyn Eidem, Keith Massey, Gerald Sommervold, Martin Sommervold, Wally Erickson, Hartley Limoges, Jim Ide, Jerry Flannery, Norman Shedd.
 3rd Row: Elgene Erickson, Rocklin Quam, Dick Chicoine, Robert Uherka, Glen Austin, Richard Harkness, Francis Tracy.
 4th Row: James Card, Kenny Massey, Dale Jones, Darmon Staum, Dale Beerman, Norman Dailey, Martin Jorgenson.

F R A

THIS PAGE SPONSORED BY JENSEN BLACKSMITH



Declam and Jr. Class Play

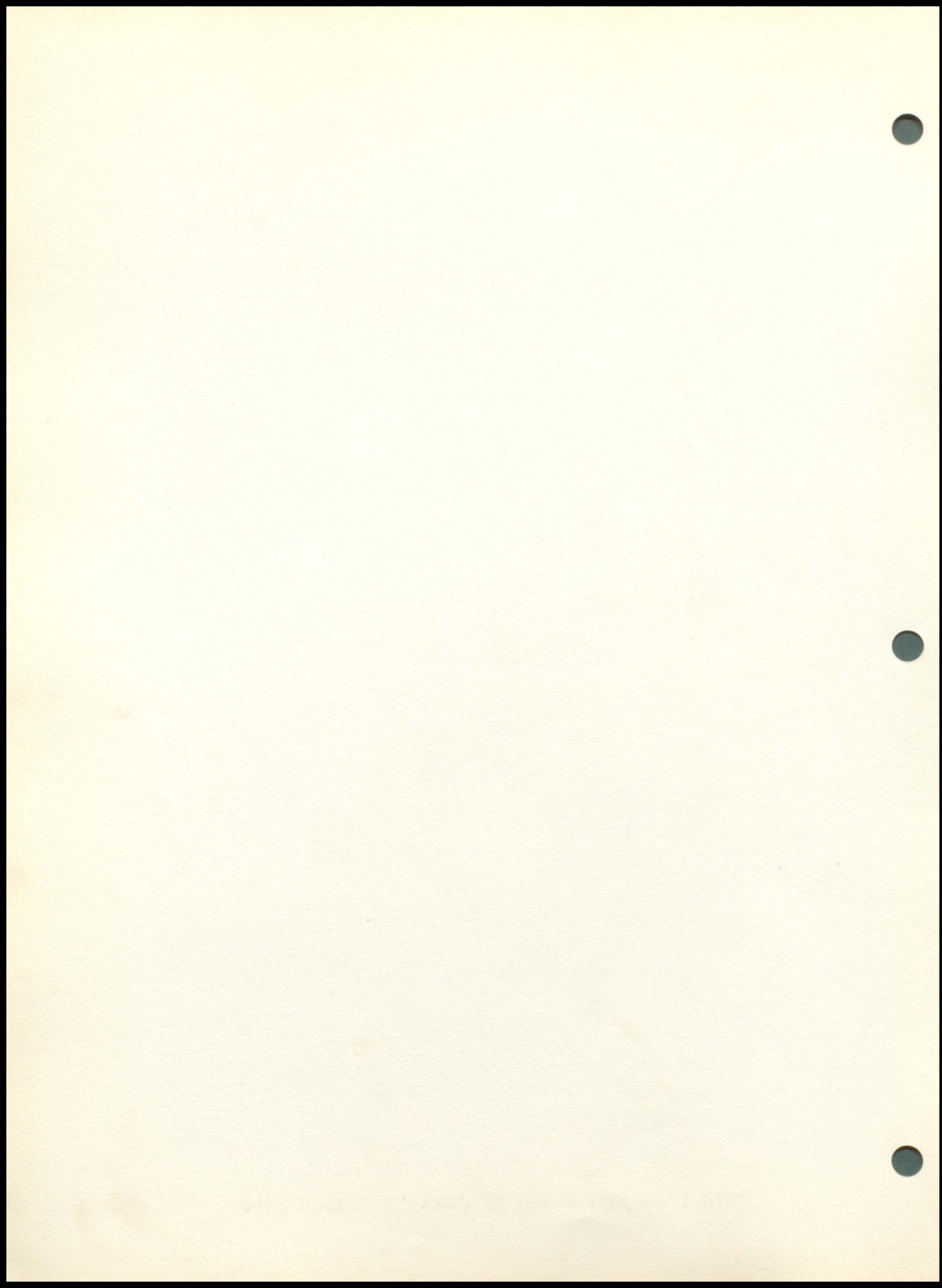


1st Row: Dwight Johnson, Jean Guy, Jean Squires, Cynthia Glass
 2nd Row: Barbara Chaussee, Patty Broderson, Shirlee Duhaime, Norma Shearon, Sharon Thorson, Mrs. Bristow - Coach, Beverly Clifford.
 3rd Row: Carole Donnelly, Barbara Joy, Patty Lynch, Jack Sanford, Barbara Duhaime, Lois Thorson.

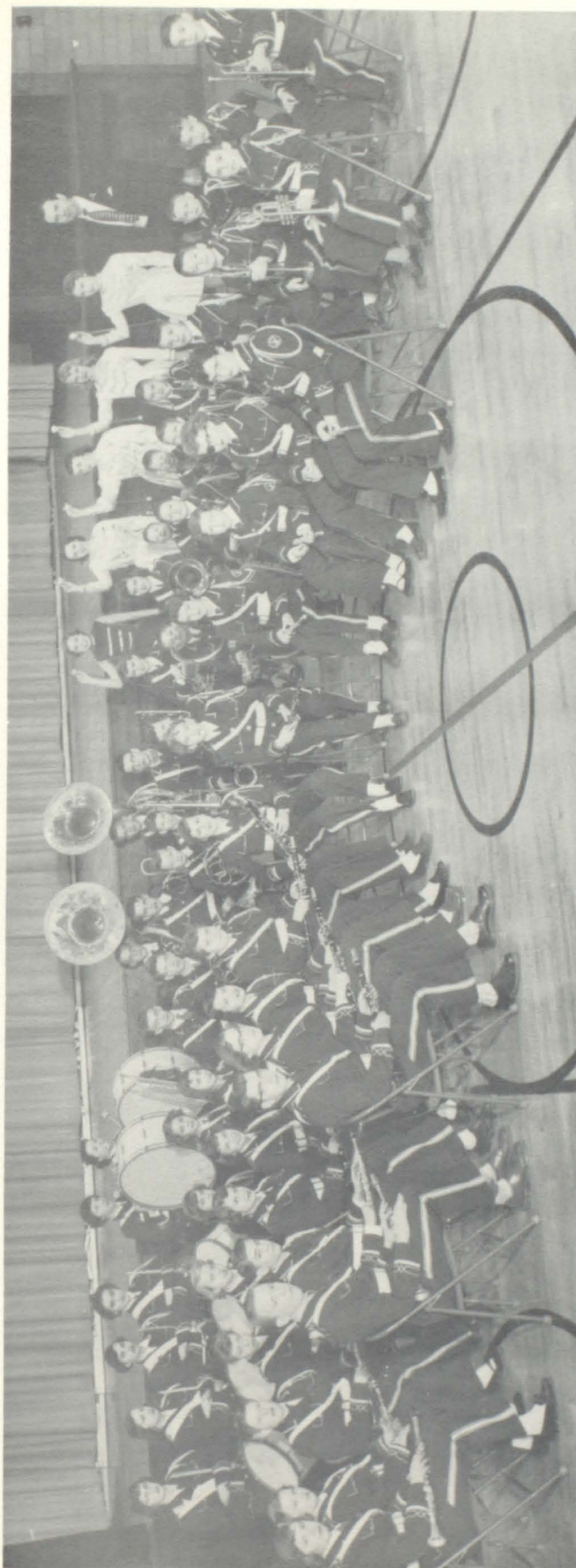


1st Row: Beverly Clifford, Kay Hoffman, Barbara Duhaime, Lavina Jefferies, Fabiola Lynch, Madonna Smith.
 2nd Row: Kent Lande, David DeBuhr, Bob Kvidahl, Craig Beck, Merrin Rodgers, Malyn Eidem.
 3rd Row: Mrs. Forman, Director.

THIS PAGE SPONSORED BY JERRY'S BARBER SHOP



Banda



CLARINET

Odean Olson
Karen Thomas
Kay Hoffman
Kathleen Anderson
Fabiola Lynch
Walter Erickson
Donald Thompson
Arlene Lyle
Sharrel Burrell
Carol Jacobson
Patty Broderson
Deanne VanBockern
Garrett Stickney
Colleen Benjamin
Sadie Carrell
Patty Ferdig

DRUMS

Adeline Riehle
Mary Lynch
Shirley Hoffman
Jane Smith
Barbara Duhaime
Dorothy Kyle

GLOCKENSPIEL

Eleanor Nystrom

OBOE

Jean Squires

FRENCH HORN

Donald Gray

Robert Gray

TROMBONE

Craig Beck

Kent Lande

Gary Eslick

Jon Larson

BASS HORN

Robert Kvidahl

Gerald Sommervood

FLUTE

Barbara Chaussee

Judy Tideman

Carole Donnelly

Barbara Joy

SAXAPHONE

Alyce Quam

Jimmy Donnelly

Bruce Wyant

Wendell Wicksell

BARITONE

Janice Rosenbaum

Jaunita Easton

CORNET

David Wicksell

Stephen Fennel

Jimmy Gill

David VanBockern

Pat Welsh

Dennis Weise

James Welsh

Joe DuBray

Ronald Wheelock

MAJORETTES

Cynthia Glass

Annabelle Groethe

Beverly Clifford

Harlene Goodroad

Sharon Thorson

DIRECTOR

Robert Beck

THIS PAGE SPONSORED BY ESTHER'S BEAUTY SHOP

Twirlers



Harlene Goodroad, Sharon Thorson, Cynthia Glass, Annabelle Groethe, Beverly Clifford.

Clarinet Quartet



Odean Olson, Kay Hoffman, Donald Thompson, Arlene Lyle.

Girls Glee Club



1st Row: Sharon Thorson, Carole Donnelly, Lois Thorson, Colleen Benjamin, Barbara Guillaume, Fabiola Lynch, Harlene Goodroad, Barbara Chaussee, Patty Broderson, Janice Rosenbaum, Cynthia Glass, Mary Lynch, Arlene Lyle, Kay Hoffman, Madonna Hanson.
 2nd Row; Mr. Beck, Director; Dorothy Kyle, Jean Squires, Celene Bernard, Marlene Rosenbaum, Joan Staum, Evon Dailey, Shirley Raynor, Jaunita Easton, Margaret Teply, Ceola Kyle, Frances Wyant, Sadie Carrell, Barbara Joy, Annabelle Groethe, Lyla Timm.
 3rd Row: Lavina Jeffries, Shirley Bertrand, Virginia Wyant, Shirley Hoffman, Lois Shedd, Kathleen Anderson, Arlis Granstrom, Deanne DeBoise, Norma Shearon, Jean Guy, Shirlee Duhaime, Rexine Tone, Jane Smith, Alyce Quam, Karen Thomas.

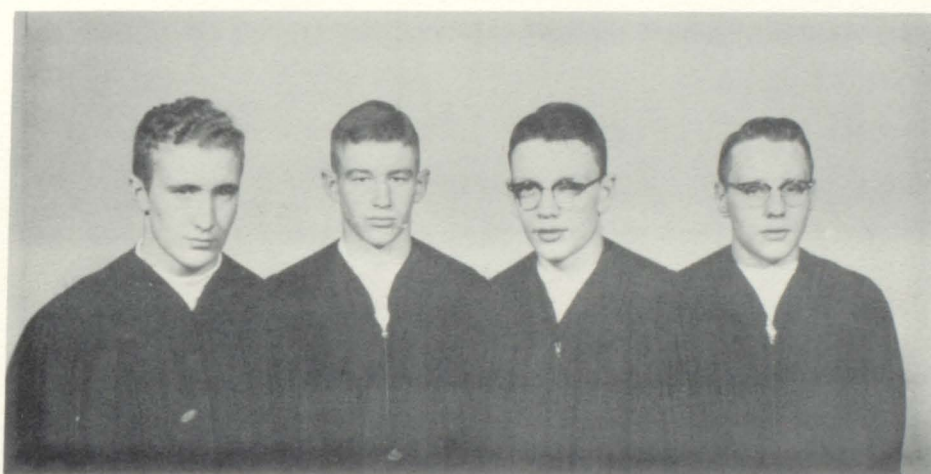
Boys Glee Club



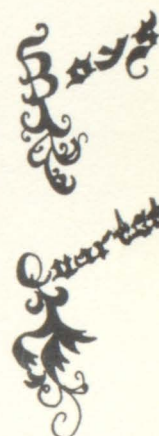
1st Row: Mr. Beck, Director; Odean Olson, Jon Larson, Craig Beck, Jack Sanford, Rocklin Quam, Fred Lungren, Julian Chicoine, Robert Livingston, Robert Uherka, Gary Bancroft, Norman Shedd.
 2nd Row: Robert Kvidahl, Malyn Eidem, Gerald Sommervold, Dwight Johnson, Colin Molzen, James Ide, Raymond Heck, Francis Tracy, David DeBuhr, Kenneth Massey, Gary Matson, Keith Massey.
 3rd Row: Ronald Molzen, Ray Ide, Eddie DuBray, Donald Thompson, Donald Fennel, Bill Pohlen, ArDean Richardson, Dale Tramp, Elgene Erickson, Martin Sommervold, Darmon Staum, Wally Erickson.



Dorothy Kyle, Celene Bernard, Kathleen Anderson, Lois Shedd, Arlis Granstrom, Cynthia Glass.



Darmon Staum, Craig Beck, Jon Larson, Robert Kvidahl.



Carole Donnelly, Janice Rosenbaum, Jaunita Easton, Shirley Hoffman, Arlene Lyle, Madonna Hanson, Kay Hoffman, Anna Belle Grothe.

THIS PAGE SPONSORED BY MATSON TRACTOR SERVICE

Homecoming



THIS PAGE SPONSORED BY MERLE DE BUHR, SINCLAIR TANK SERVICE

Elk-Day

Elk Day for 1953 was the high light of the school year. The festivities began Thursday evening, October 23, with the coronation ceremony at the high school auditorium, when Donna Girard, Queen of 1952, crowned Kenneth Massey and Lois Thorson as King and Queen. The Senior attendants were Avis Beavers, Don Hasson, Lois Shedd, and Dale Jones. The other attendants were Kay Hoffman, Beverly Clifford, Janice Rosenbaum, and Sharon Thorson. King Kenny and Queen Lois were honored by wearing beautiful new robes.

The Elk Day parade was the largest ever held. The Junior float won first prize, the Senior float second prize, and the Freshman float third prize. The Pointers won the football game by defeating Centerville 60 to 14. The Homecoming dance after the game brought to a climax the festivities of this never-to-be-forgotten Elk Day.



1st Row: Sharon Thorson, Beverly Clifford, Barbara Benjamin, Suzanne Hoffman, Kay Hoffman, and Janice Rosenbaum.
2nd Row: Avis Beavers, Lois Shedd, Dennis Ruser, Lois Thorson, Robert Pederson, Jim Callahan, Kenneth Massey, Dale Jones and Don Hasson.



Athletics

C.B.

THIS PAGE SPONSORED BY THE OSTLAND BARBER SHOP.

Football Team



- 1st Row: Jim Easton, Darmon Staum, Martin Sommervold, Bob Livingston, Dale Jones, Kenneth Massey, Don Hasson, Keith Massey.
- 2nd Row: Chuck Voss--Coach, Gary Matson, Bob Kvidahl, Dick Chicoine, Jon Larson, Kent Lande, David DeBuhr, Craig Beck, Merrin Rodgers, ArDean Richardson, Dale Tramp.
- 3rd Row: Jerry Sommervold, Ray Ide, Jack DeBuhr, Wally Erickson, Jack Sanford, Hartley Limoges, Dwight Johnson, Ronald Molzen, Malyn Eidem, Alfred Crogan--Asst. Coach.
- 4th Row: Rocklin Quam, Elgene Erickson, David Wicksell, Colin Molzen, Norris Bancroft, Fred Lungren, Bruce Livingston, Julian Chicoine.
- 5th Row: Eddie DuBray, Norman Shedd, Ronald Guilleume.



FOOTBALL SCHEDULE

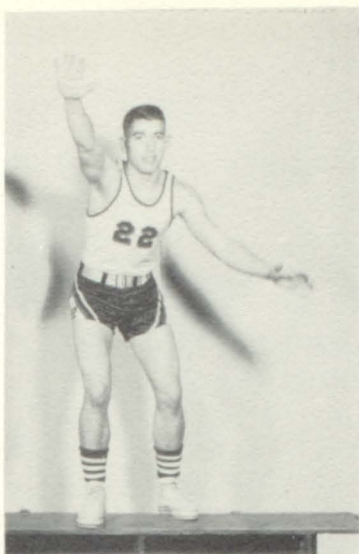
	<u>We</u>	<u>They</u>
Springfield	31	6
Hurley	24	0
Canton	24	26
Parker	25	6
Beresford	26	0
Lennox	20	6
Centerville	60	14
Akron	27	0
Hawarden	12	32

Elk Point finished a very successful season this year. Only two games were lost which gave the Pointers a 7-2 record.

Don Hasson made All-State 5th team and Darmon Staum received Honorable Mention. Bob Livingston, Kenny Massey, Keith Massey, and Don Hasson made the all-conference team.

Two players were seriously injured this year--Gary Matson with a broken collar-bone and Darmon Staum with a knee injury.

THIS PAGE SPONSORED BY ALLEN "SPECK" PARSONS



Bob Livingston



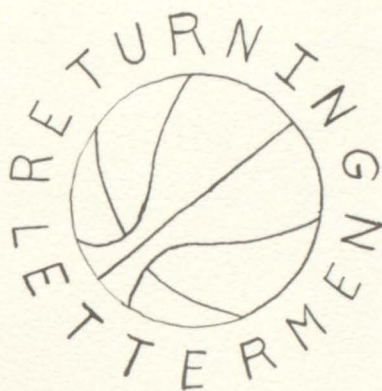
Dale Jones



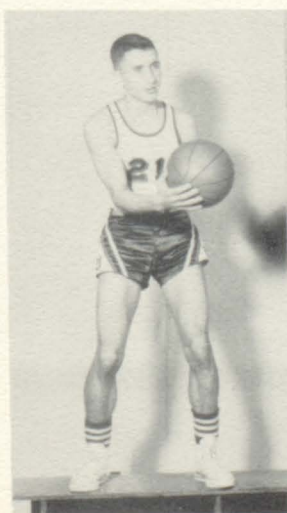
Don Hasson



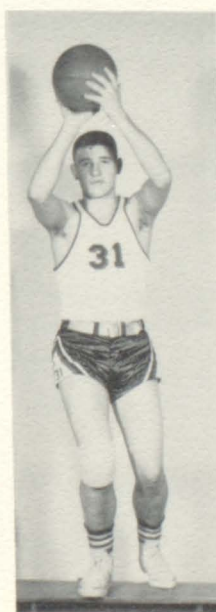
Kenneth Massey



Keith Massey



Gary Matson



Dale Tramp



Craig Beck

THIS PAGE SPONSORED BY PAT'S PRODUCE

"A" Team



1st Row: Bob Livingston, Craig Beck, Keith Massey, Dale Tramp, Gary Matson.
2nd Row: Malyn Eidem, Merrin Rodgers, Darmon Staum, Kenneth Massey, Dale Jones, Don Hasson, Ray Ide, Jon Larson.

"B" Team



1st Row: Jon Larson, Ray Ide, Merrin Rodgers, Jack Sanford, Jerry Flannery.
2nd Row: Norris Bancroft, James Ide, Eddie DuBray, Malyn Eidem.

THIS PAGE SPONSORED BY PETERSON DRUG

Cheerleaders

Annabelle
Groethe



Lois
Thorson



Avis
Beavers



Shirley
Hoffman



Track

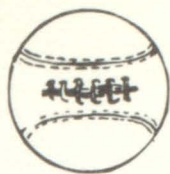


1st Row: Dwight Johnson, Hartley Limoges, Merrin Rodgers, Don Hasson, Dale Jones, Keith Massey, Malyn Eidem.
2nd Row: Jack Sanford, ArDean Richardson, Ray Ide, Craig Beck, Jon Larson, Kenneth Massey, Darmon Staum,

Letter Club



1st Row: Dale Tramp, Jon Larson, Dale Jones, David BeBuhr, Bob Kvidahl, Don Hasson.
2nd Row: Mr. Crogan--Asst. Coach, Kent Lande, Malyn Eidem, ArDean Richardson, Gary Matson, Mr. voss--Coach.
3rd Row: Martin Sommervold, Jack Sanford, Ray Ide, Dick Chicoine, Bob Livingston.
4th Row: Keith Massey, Darmon Staum, Gerald Sommervold, James, Easton, Kenneth Massey.
5th Row: Dwight Johnson, Colin Molzen, Wally Erickson, Merrin Rodgers, Fred Lungren, Bruce Livingston.

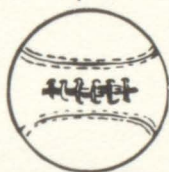


Patty Broderson

"B" Cheerleader



Sharon Thorson



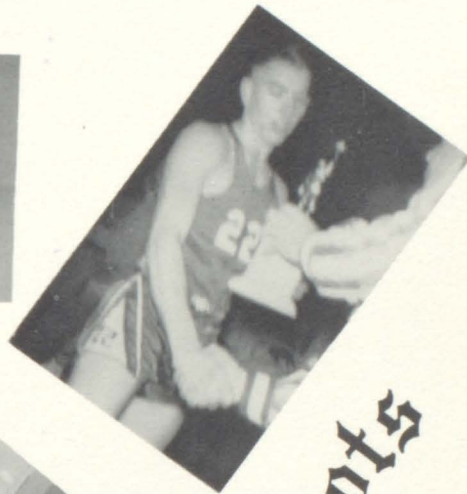
Jr. High Basketball



1st Row: David Matson, Darrell Law, Ronald Matson, Everett Graves, Dennis Bird, George Donnelly, Darrell Tramp, Michael Chaussee.

2nd Row: Dennis Donnelly, Jerry Ferdig, Donald Dion, Fred Johnson, Dennis Garvis, Ronald Pesicka, Mr. Forman--Coach.

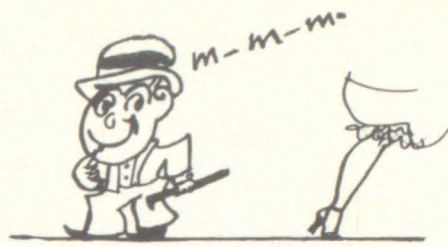
THIS PAGE SPONSORED BY RINGSRUD MERC. CO.



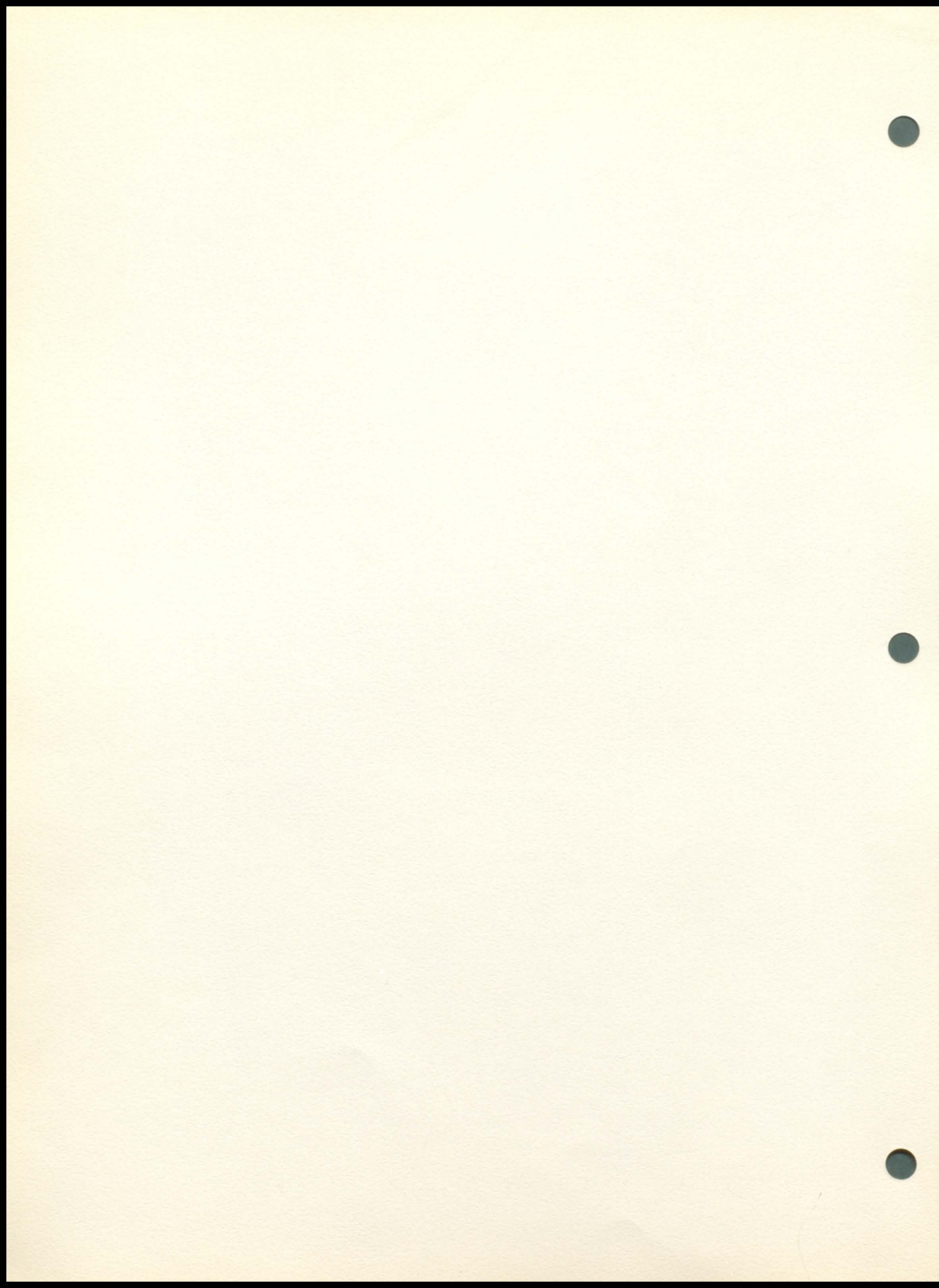
Basketball Snapshots



Around School



THIS PAGE SPONSORED BY SEVEREIDE PANTRY LUNCH



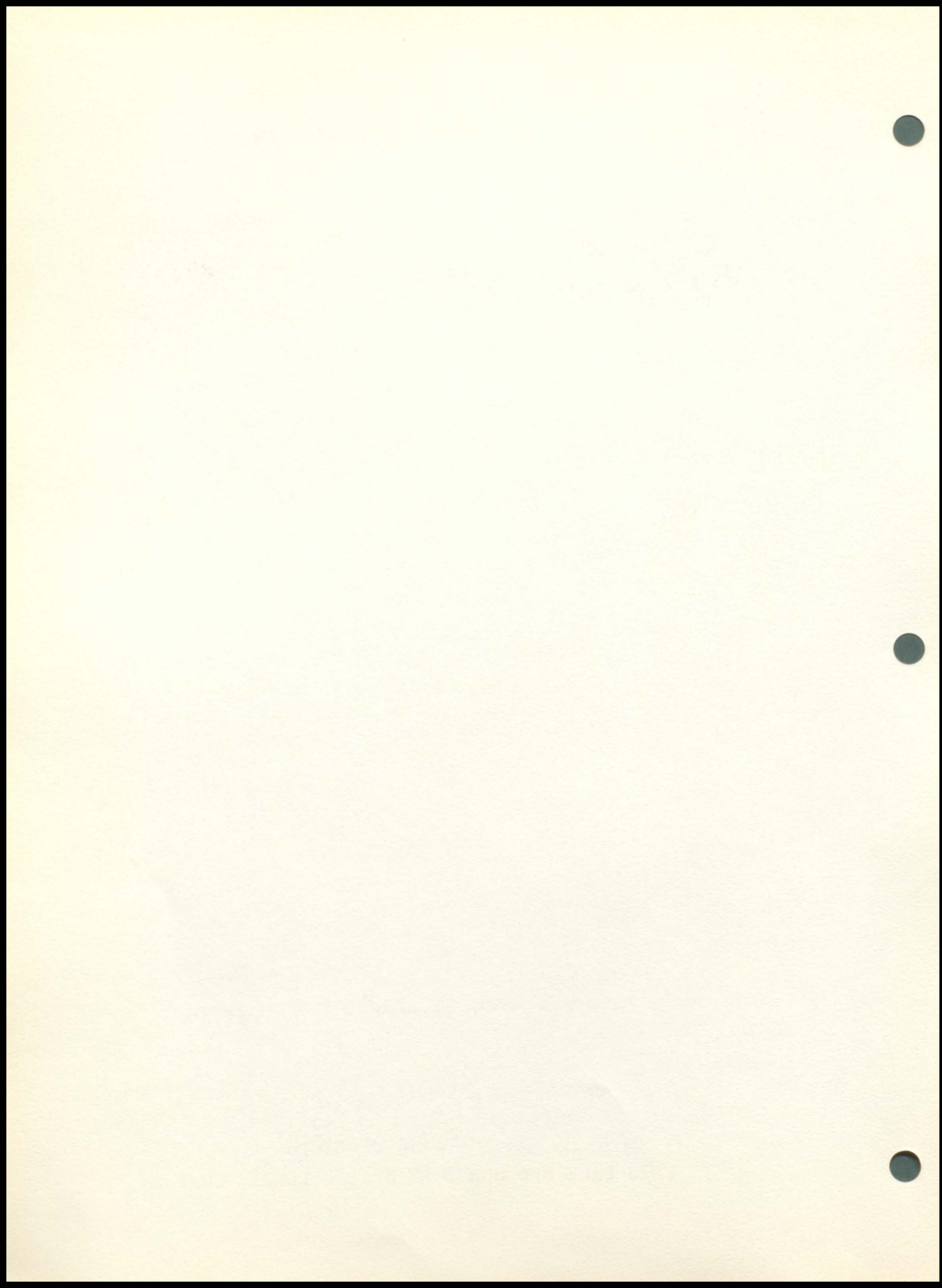
Junior Study Hall



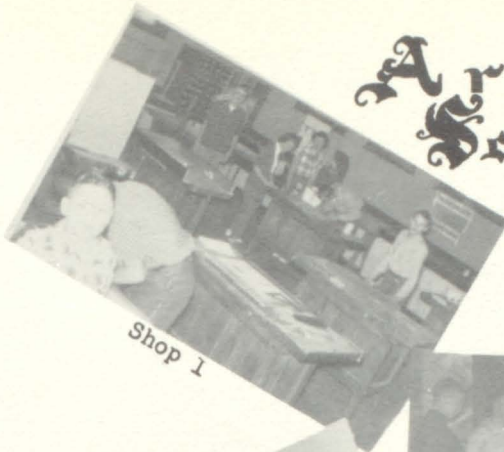
Senior Study Hall



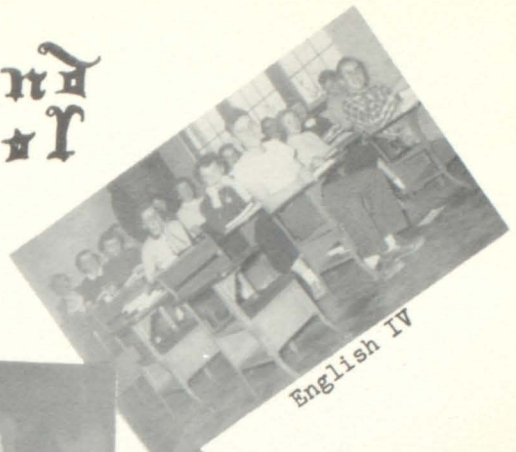
THIS PAGE SPONSORED BY SLAGLE LUMBER COMPANY



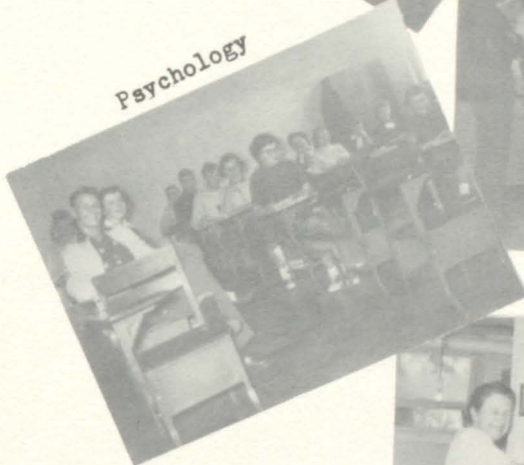
Around School



Shop 1



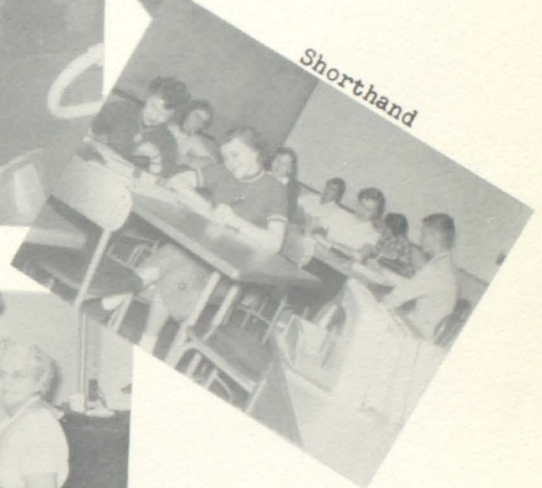
English IV



Psychology



Ag IV



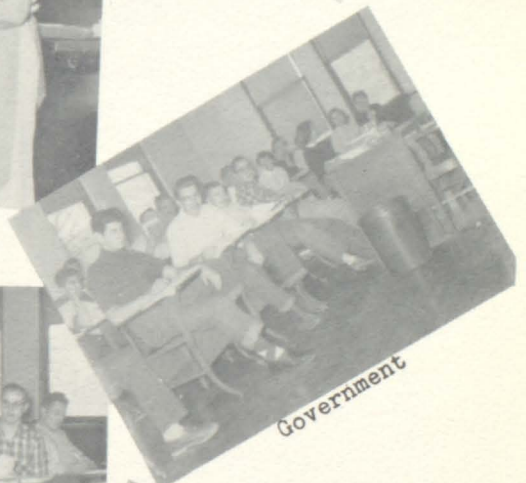
Shorthand



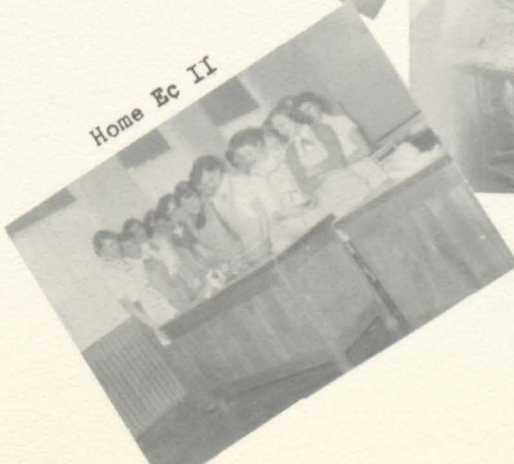
Cooks



Typing



Government



Home Ec II



Physics



Ag IV







THIS PAGE SPONSORED BY VEN'S DISTILLED WATER SERVICE



Prophecy

MARLYS LIVINGSTON
Bathing Beauty

NORMAN GIRARD
A Hermit

LOIS THORSON
Pigmy Globe Trotter

SHIRLEY BERTRAND
Trigger's Companion

GLENN JOHNSON
Chemistry Teacher

BESSIE IRWIN
Mother of 12 Children

CELENE BERNARD
Artistic Housewife

JEAN SQUIRES
Shorthand Teacher

DONALD FENNEL
Hotrod Racer

DOROTHY KYLE
Music Teacher

ARLIS GRANSTROM
The Wizard of "Oz"

KERIN SOLBERG
Professional Skater

BILL POHLEN
Circus Muscle Man

MARGARET CARD
Home Ec. Teacher

CYNTHIA GLASS
Nylon Stocking Model

KATHLEEN ANDERSON
Republican Politician

EVON DAILEY
Nurses Aid

PATRICIA LYNCH
"Calvin"ator
Saleswoman

DON HASSON
Casket Salesman

JAMES EASTON
T V Salesman

AVIS BEAVERS
Mortician's Helper

KEITH MASSEY
Sports Reporter

BOB LIVINGSTON
Jefferson's Coach

LOIS SHEDD
Ulcer Specialist

ODEAN OLSON
Ag. Teacher

MADONNA HANSON
Chorus Girl

KENNETH MASSEY
Garbage Collector

DALE JONES
Mark Trail's Assistant

DARMON STAUM
Professional Baby Sitter

1 9 6 4

Calendar of Events

SEPTEMBER

- 8-First day of school
- 11-Springfield, there
- 18-Hurley, there
- 25-Canton, there

SCHOOL
STARTS



OCTOBER

- 2-Parker, there
- 5-Teachers' Reception
- 9-Beresford, here
- 12-Teachers' Reception
- 16-Lennox, there
- 17-End of 1st six weeks
- 22-Coronation
- 23-Elk Day
- 24-Dakota Day
- 30-Akron, here



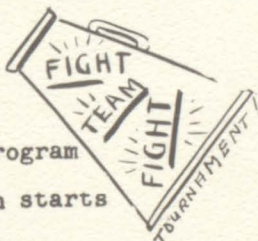
NOVEMBER

- 6-Hawarden, there
- Assembly Program
- 10-Local Declam
- 17-District Declam
- 20-Junior Class Play
- 27-End of 2nd six weeks



DECEMBER

- 1-Canton, here
- 4-Parker, there
- 8-Hurley, here
- 9-Assembly Program
- 10-Annual Pictures
- 11-Beresford, there
- 15-Centerville, here
- 16-Grade Christmas Program
- 18-Lennox, there
- Christmas vacation starts
- 29-Invitational



JANUARY

- 4-End of Christmas vacation
- 5-Wakonda, here
- 8-Beresford, here
- 15-Leeds, there
- 20-F.H.A. Meeting at Vermillion
- 22-Parker, here
- Assembly Program
- 23-End of 1st semester
- 26-Hurley, there
- General Motor Show
- 27-Akron, here
- 29-Jefferson, here



FEBRUARY

- 2-Centerville, there
- 5-Lennox, here
- 9-Music Contest, Local
- 12-Alcester, there
- Solo and small ensemble
- 16-Jefferson, there
- 17-Assembly Program
- 18-Canton, there
- 19-Sweetheart Dance
- 25-26-27-District Basketball Tournament



MARCH

- 2-Assembly Program
- 5-End of 4th six weeks
- 12-F.F.A. Dance
- 15-Student Gov't. Day
- 17-F.H.A. Mother's Tea
- 25-Band Concert



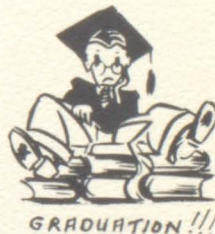
APRIL

- 3-Music contest at Vermillion
- 9-Holsten Relays
- 15-Mitchell Relays
- 17-End of 5th six weeks
- 23-Senior Class Play
- 24-Conference
- 30-Skip Day



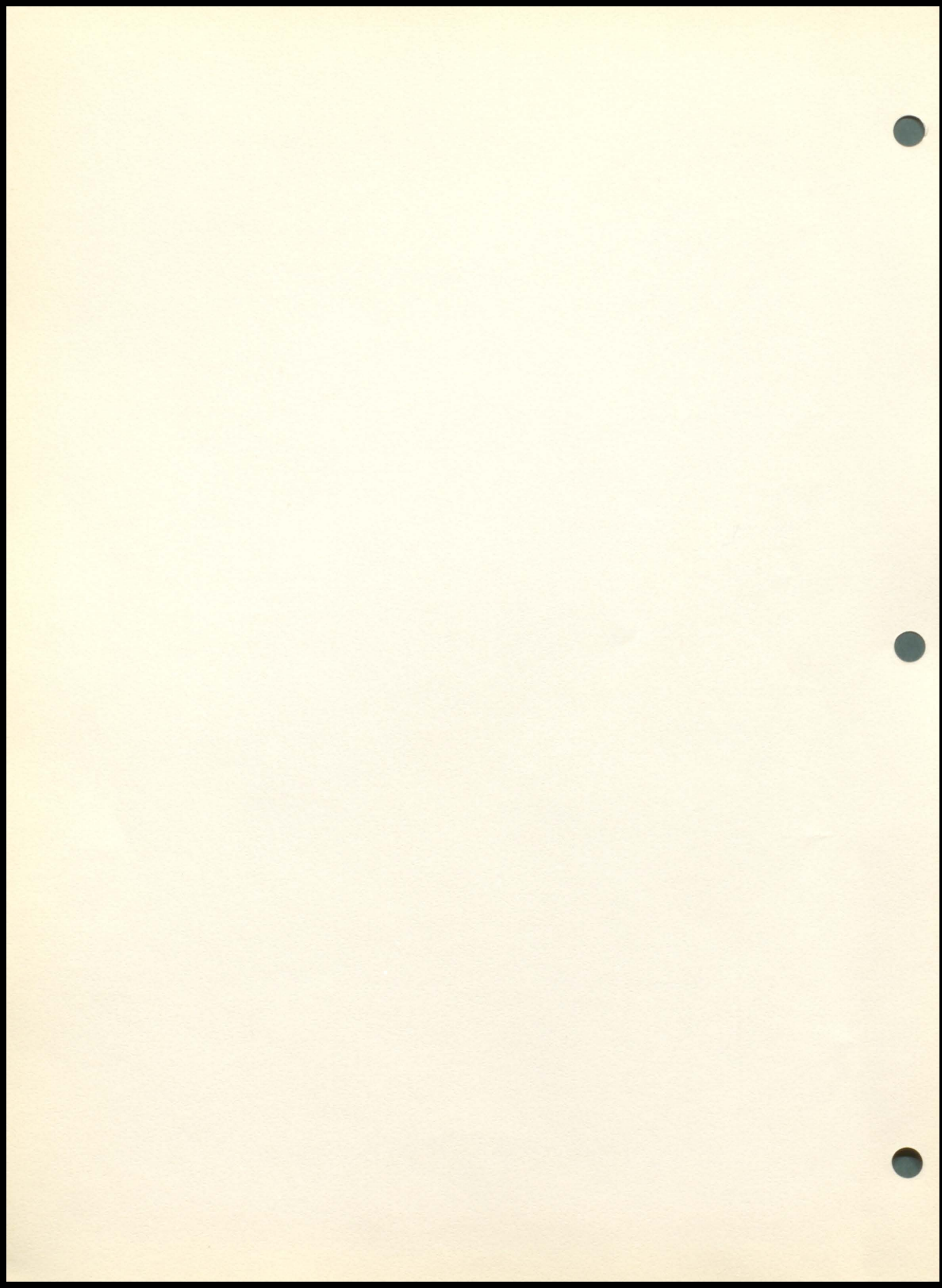
MAY

- 8-Junior-Senior Prom
- 23-Graduation
- 28-Last day of school



Summer Vacation!



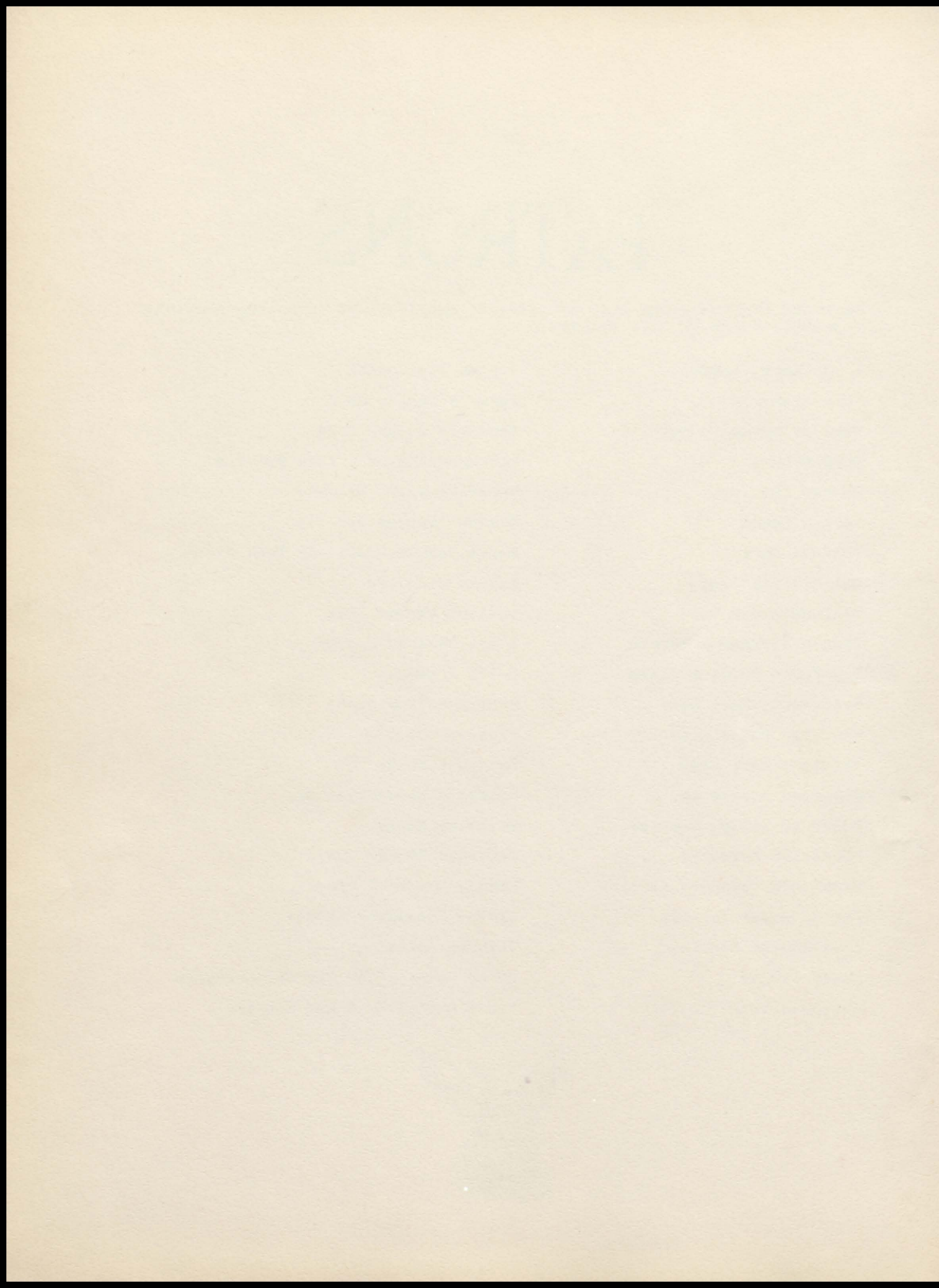


PATRONS

We thank the following list of patrons who assisted in making possible the publication of this volume.

A. J. Beck, Lawyer	Jensen Blacksmith
Auto Electric	Jerry's Barber Shop
Bank of Union County	Esther's Beauty Shop
Bray Motors	Livingston Bros., City Service
Busker Imp. Co.	Marshall-Wells Store
Carl's Lunch	Matson Tractor Service
Cottage Cafe	Merle DeBuhr, Sinclair Tank Wagon
Council Oak Store'	Modern Cleaners
Dell Bakery & Cafe	Ostlund Barber Shop
Dick's Service & Repair	Allen "Speck" Parson
Elk Point Paint & Glass	Pat's Produce
Everhart's Pool Hall	Peterson Drug Store
Farmers' Union Elevator Co.	Pioneer Drug Co.
Ferdig's Body Shop	Renfro Variety
Flannery Lumber Co.	Ringsrud Mercantile Co.
Frank C. Teply, Gambles	Sanitary Market
Halverson Hardware	Severeid Pantry Lunch
Hammitt's Standard Service	Slagle Lumber Company
Hasson Motor Service	Smythe Insurance Agency
Iowa Public Service	Solberg Implement
Isaak Clinic	Union County Electric Co-operative
Jacobson Locker Service	Ven's Distilled Water Service







INTER-COLLEGIATE PRESS

Publishers · Cover Manufacturers · Book Binders

FACTORY · HOME OFFICE

Kansas City

